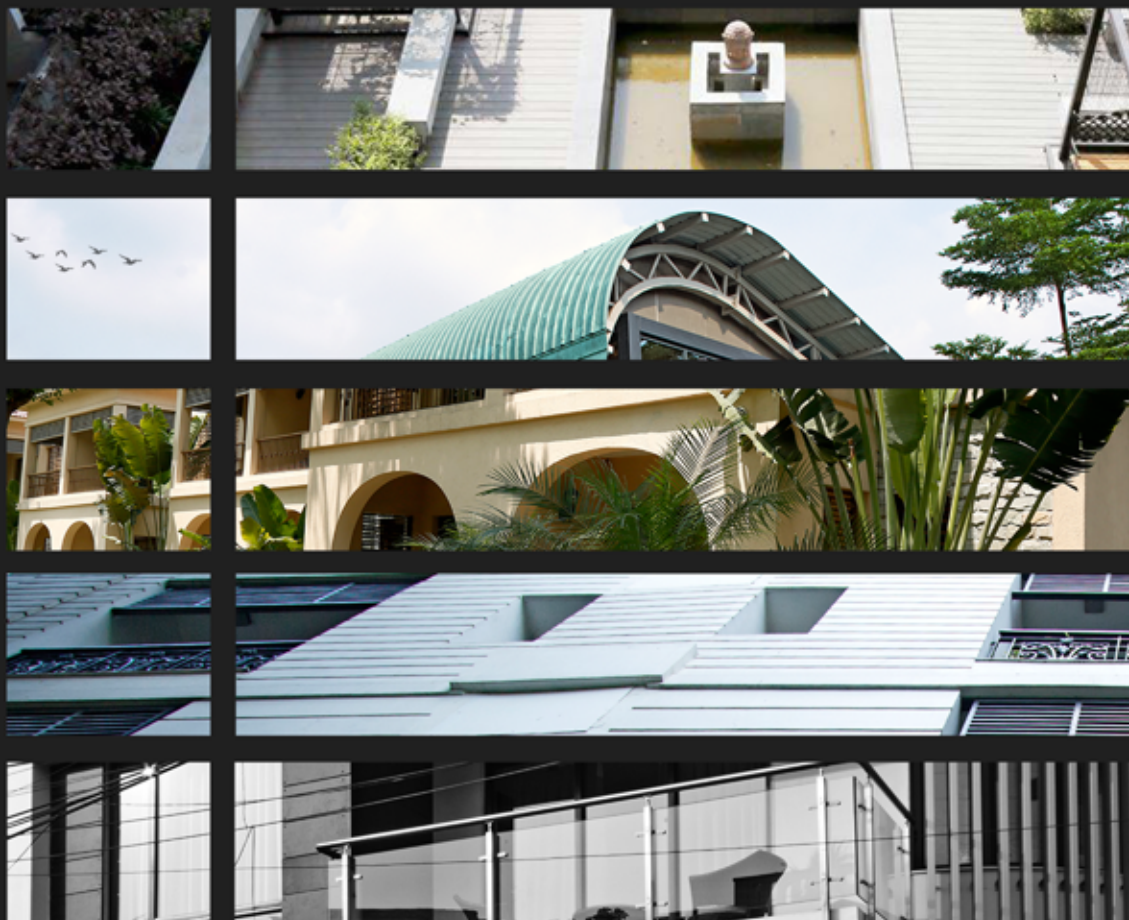


The background image is a photograph of a modern architectural courtyard at night. The scene is illuminated with a warm, golden light. In the center, a stone Buddha head statue sits on a square pedestal. The courtyard is defined by low concrete walls and features several rectangular planters filled with greenery. In the background, there are more planters and a dark structure, possibly a gate or a building entrance. The overall atmosphere is serene and contemporary.

'12X12'

12 YEARS OF ASAUDP IN 12 PROJECTS



ayan **sen architects**
urban designers planners

the contents

01



the team
the studio

02



nirvana
apartments

03



ibiza
resort

04



canopy
villa

05



bengal
rowing club

06



multi-family housing
in alipore

07



the bes
college

08



goenka
villa

09



edifice

10



chaudhuri
villa

11



usha uthup
residence

12



short
street

13



lunia
villa

the team



ayan sen

Ayan Sen is a graduate of School of Architecture, CEPT, India and has done his masters from Massachusetts Institute of Technology, USA. He has been working on a range of Architecture, Urban Design and Planning Projects in the United States and India as well as consulted on several Real Estate and Economic Development initiatives.

He provides specialized expertise in the areas of master planning for waterfronts and campuses including residential and mixed use projects. He has been involved with the design of the Anacostia Waterfront Initiative, Washington D.C., a Mixed-use development for Pittsburgh Waterfront, University of Maryland Eastern Shore Campus and Military Base Reuse in the Metropolitan DC. Area. Master Planning of Townships, Canal fronts and Parkland planning are some of the projects in India that are being done by the his firm.



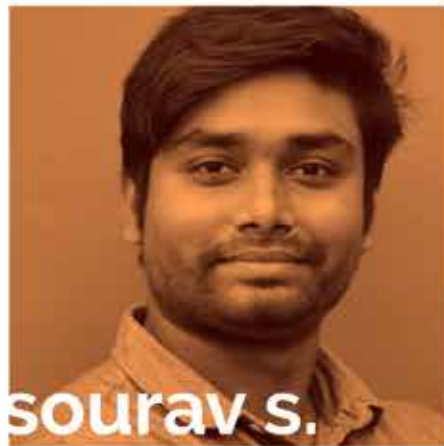
arindam s.



arpan s.



deep m.



sourav s.



britam d.



malabi c.



saurav g.



aparajita k.



santorip c.



srabanti d.



anwesha b.



kasturi b.

the studio

- Ayan Sen Architects Urban Designers & Planners (ASAUDP) was set up by Ayan Sen with himself as the lead Principal Architect, Urban Designer & Planner in the year 2005. Ayan's professional experience started after his graduation from the School of Architecture, CEPT, Ahmedabad in 1997. Post his initial professional training, he worked in cutting edge Indian practices at Ahmedabad and New Delhi and in stellar urban design and architecture firms in Washington DC and Pittsburgh, USA.

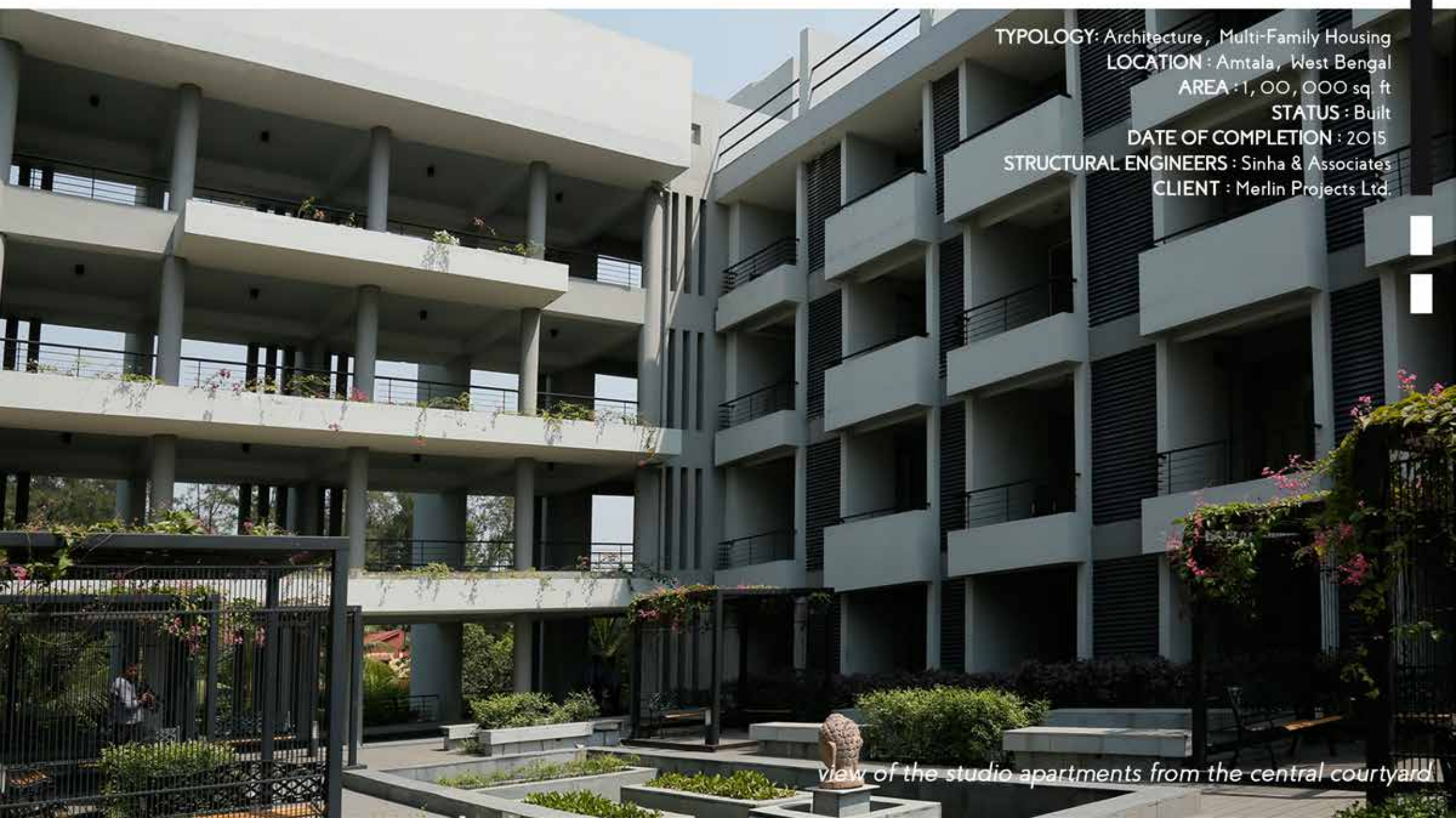






nirvana apartments

- A minimal expression of contemporary tropical vernacular is the studio apartment building. Nirvana. Young professionals and people of a similar mindset need a getaway from the city that is affordable. This program was conceptualized by ASAUDP as a stack of rooms with living spaces, kitchen space and smart toilets, designed in a unit space of approximately 450 square feet. Raised courtyards, spillover areas, lounging spaces created a seamless labyrinth of semi-open and open spaces. Linear bridge-like verandah spaces connect the two blocks. Openings, also linear, create a permeable skin along the edge of the building. A raised courtyard is designed to create kiosks for couples and smaller groups. The landscape firm working with ASAUDP - PL Design of Thailand - had a brief to create a tropical minimalist landscape that would work with ASAUDP's architectural language to create variation and yet have an inherent order.



TPOLOGY: Architecture, Multi-Family Housing

LOCATION: Amtala, West Bengal

AREA: 1, 00, 000 sq. ft

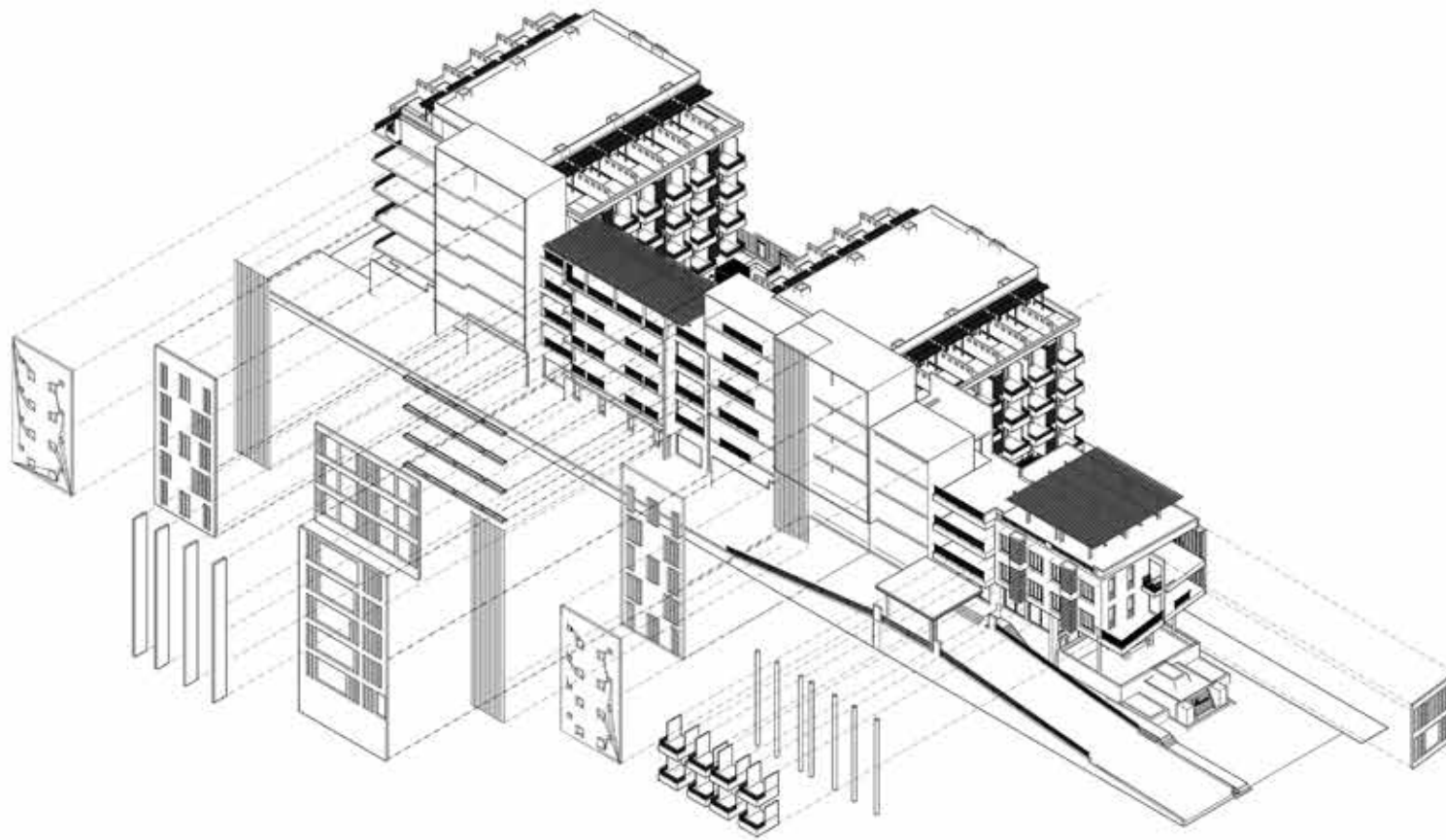
STATUS: Built

DATE OF COMPLETION: 2015

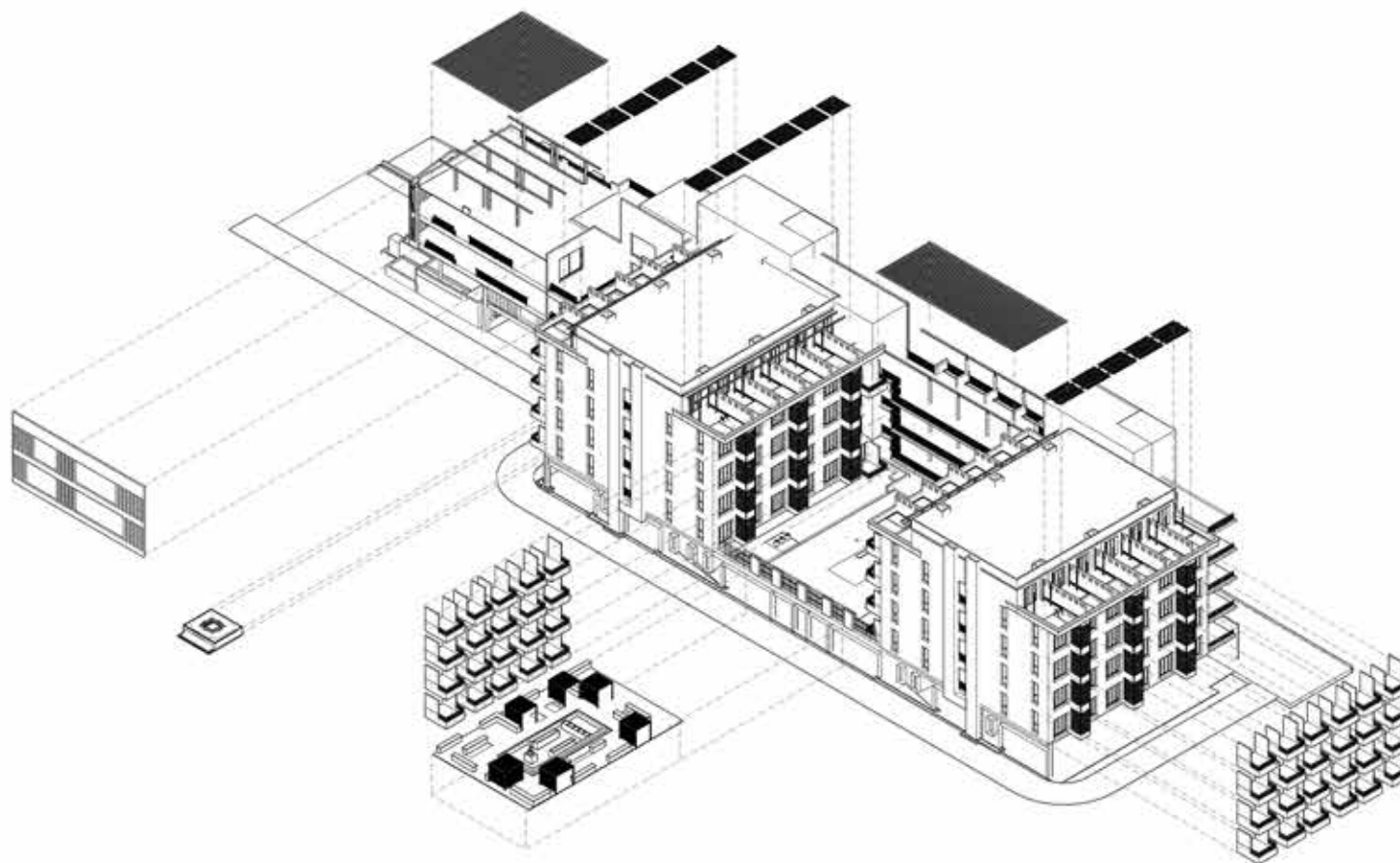
STRUCTURAL ENGINEERS: Sinha & Associates

CLIENT: Merlin Projects Ltd.

view of the studio apartments from the central courtyard



axonometric view
(north-east)



axonometric view
(south-west)



vertical louvers



vertical slits



colonnades



balconies



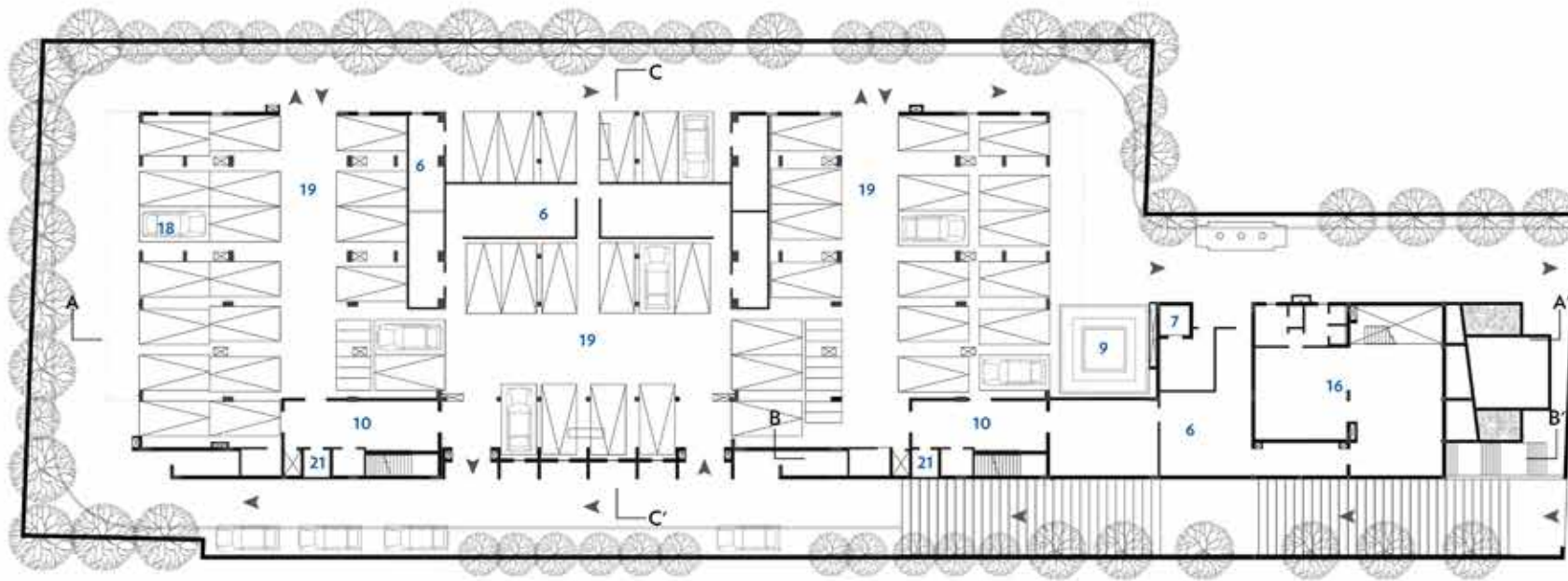
pergola



courtyard

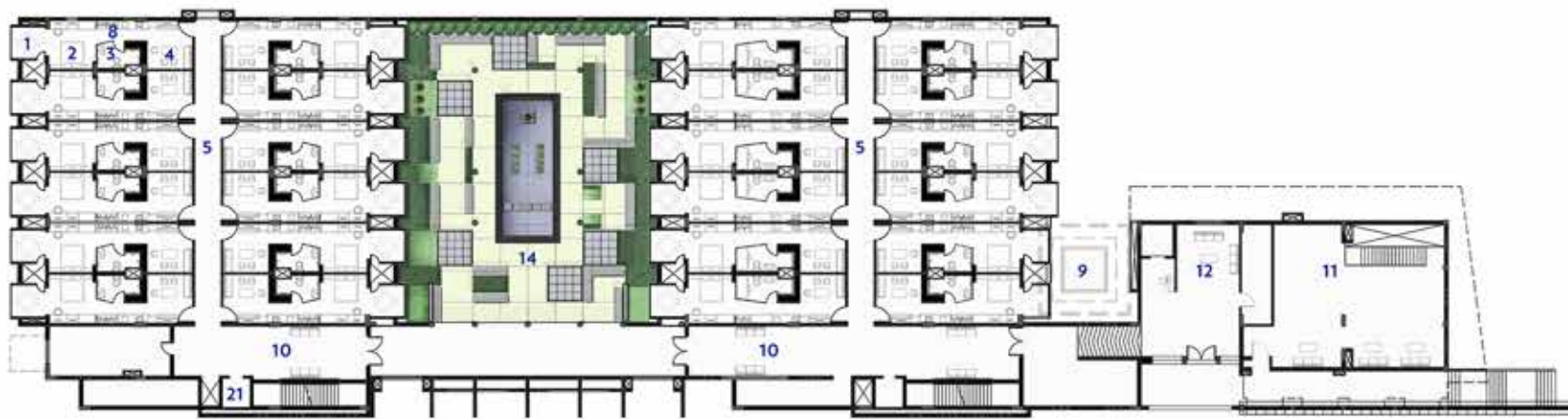


seating



- | | |
|-----------------|---------------------|
| 1. BALCONY | 11. HALL |
| 2. BEDROOM | 12. RECEPTION |
| 3. TOILET/ BATH | 13. ELECTRICAL DUCT |
| 4. LIVING ROOM | 14. COURTYARD |
| 5. CORRIDOR | 15. STORE |
| 6. SERVICE | 16. DANCE FLOOR |
| 7. SERVICE LIFT | 17. SERVICE |
| 8. PANTRY | 18. PARKING |
| 9. POOL | 19. DRIVEWAY |
| 10. LOBBY | 20. DUCT |
| | 21. LIFT |

ground floor plan



first floor plan



entrance to the apartments



view of the central courtyard

■ **TYPOLOGY:** Architecture and Master-Planning, Hospitality
LOCATION : Amtala, West Bengal
AREA : 40, 000 sq. ft
STATUS : Built
DATE OF COMPLETION : 2012
LANDSCAPE : PL Design, Thailand
INTERIORS : Maheshwari and Associates
STRUCTURAL ENGINEERS : Sinha and Associates
CLIENT : Merlin Leisure Pvt. Ltd.





ibiza resort

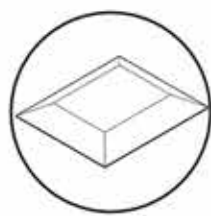
■ A hospitality project expressing a contemporary colonial theme in a sprawling resort in Kolkata's high density urbanity. This resort is a minimalistic re-interpretation of a Spanish colonial style around a tropical water body. A collaborative effort between the architect (ASAUDPI), the landscape architect (PL Design, Thailand), lighting consultants, interior designers and significant client input (Merlin Resorts) - the master plan design comes with a hotel block, villas, a lobby, a banquet, stand alone bars and a spa. The hotel block is the first built phase and the balance is being constructed in a phased manner, without disturbing the existing running facilities.

The site came with a large water body and with that the challenge to incorporate the many independent functions of the resort in the master plan. The idea of an arrival, loggias, canopies and walkways with arches and pitched roofs is the basis of the design language.

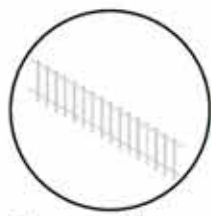
Along with PL Design of Thailand, the landscape architect of the project, it was decided to use the local vegetation aesthetically to create a beautiful green gateway, minutes away from the concrete of Kolkata. In order to preserve the vegetation and make the most use of the water body, the master plan is designed in such a way that all rooms have the lake view.



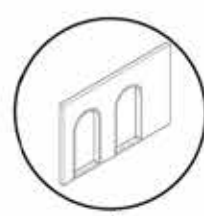
view of the hotel block



roof



iron railings



arches



reflecting pool



arched walkway



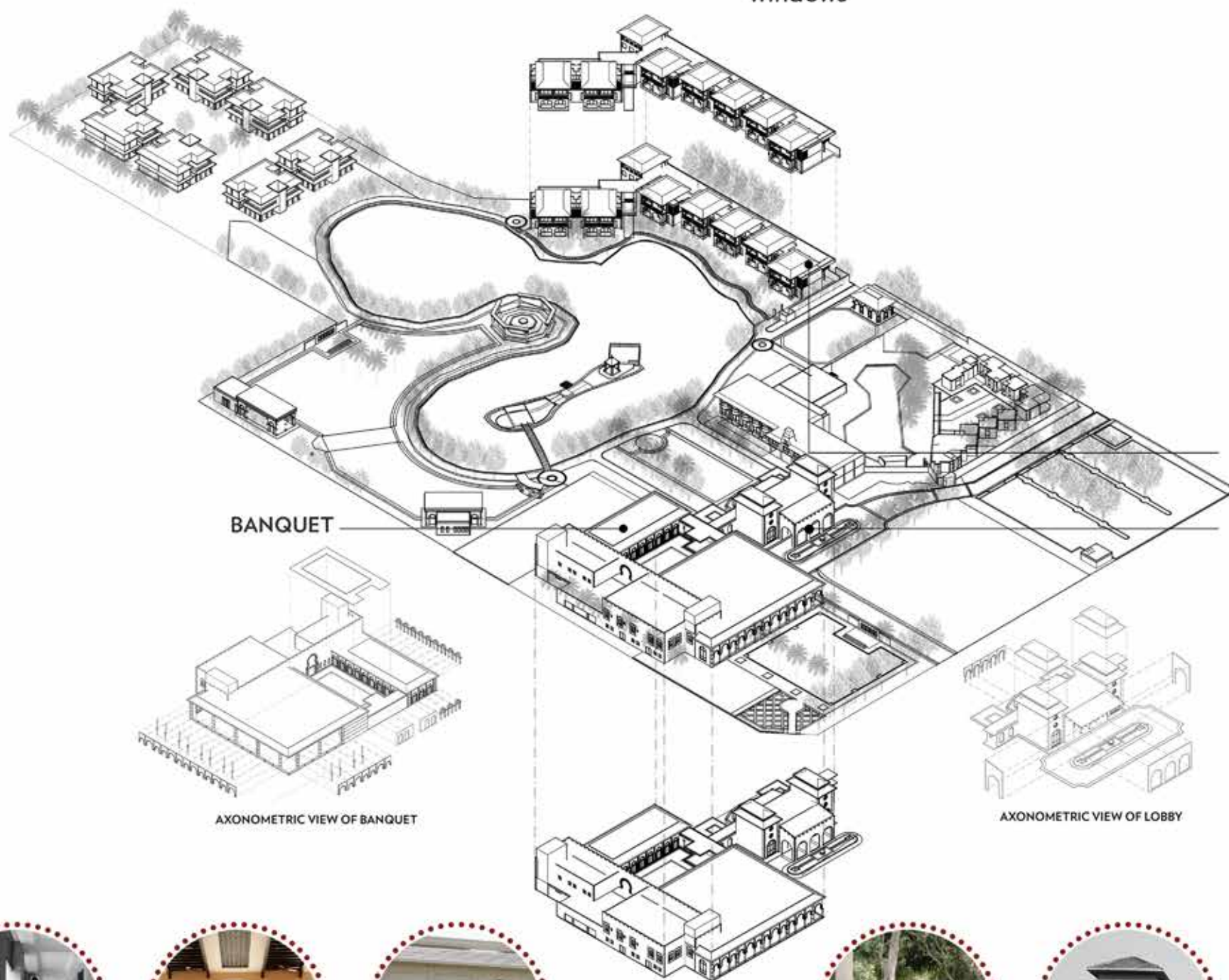
wooden louvers



arches over windows



arched colonnade



HOTEL

LOBBY

BANQUET

AXONOMETRIC VIEW OF BANQUET

AXONOMETRIC VIEW OF LOBBY



corridors



arches



arched colonnades



balcony



roofs



pathways



1. HOTEL
2. SPA
3. KIDS' POOL
4. SWIMMING POOL
5. COTTAGE
6. LOBBY
7. DROP OFF
8. LOBBY GARDEN
9. BANQUET
10. RESTAURANT
10. TENNIS COURT
11. ACTIVITY LAWN
12. CLUB BUILDING
13. PAVILION
14. WATERFALL
15. RESORT
16. ROAD
17. GARDEN
18. LAKE
19. FOUNTAIN PLAZA

site plan

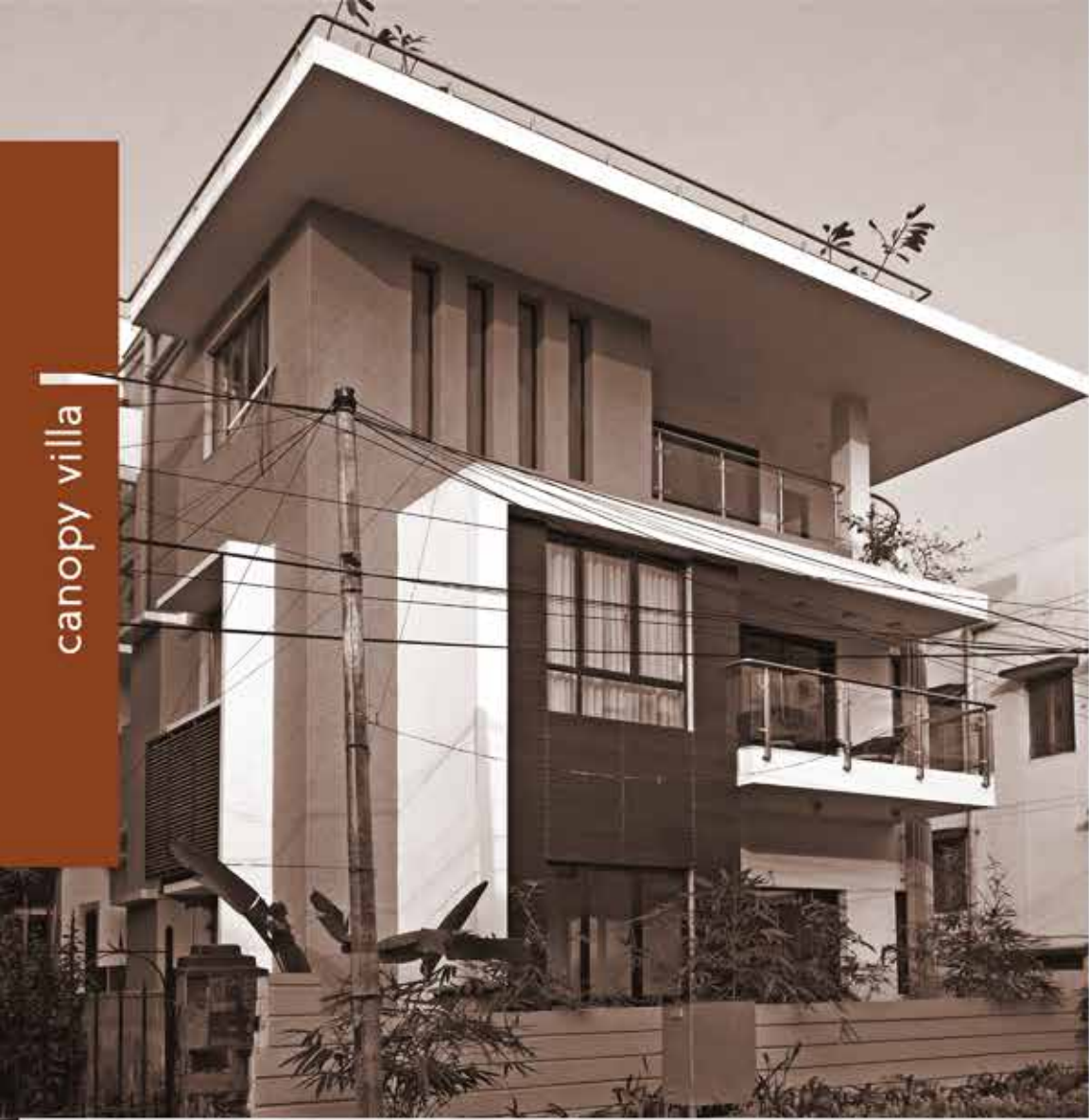


entrance to ibiza



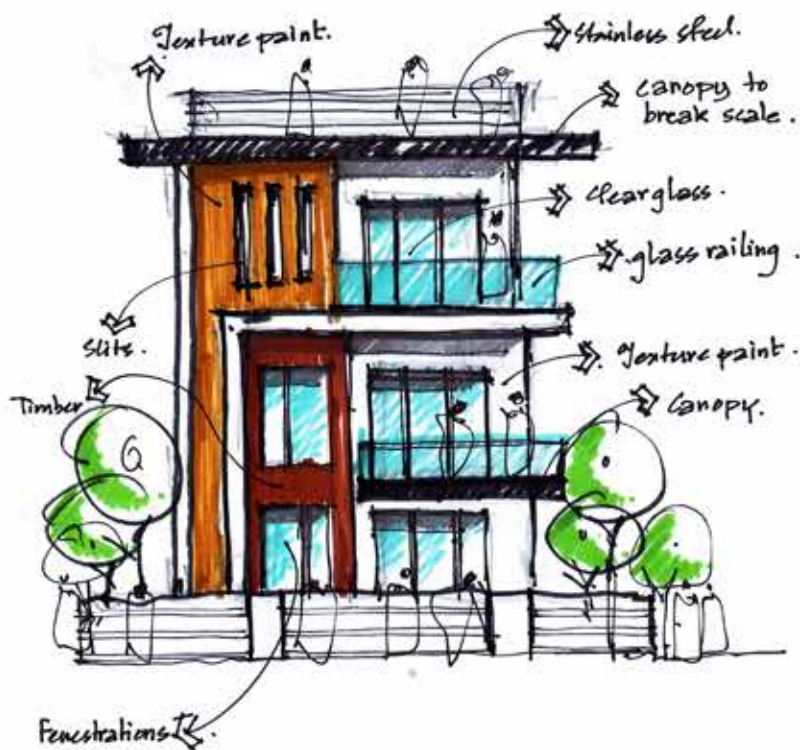
view of the hotel block

canopy villa





canopy villa

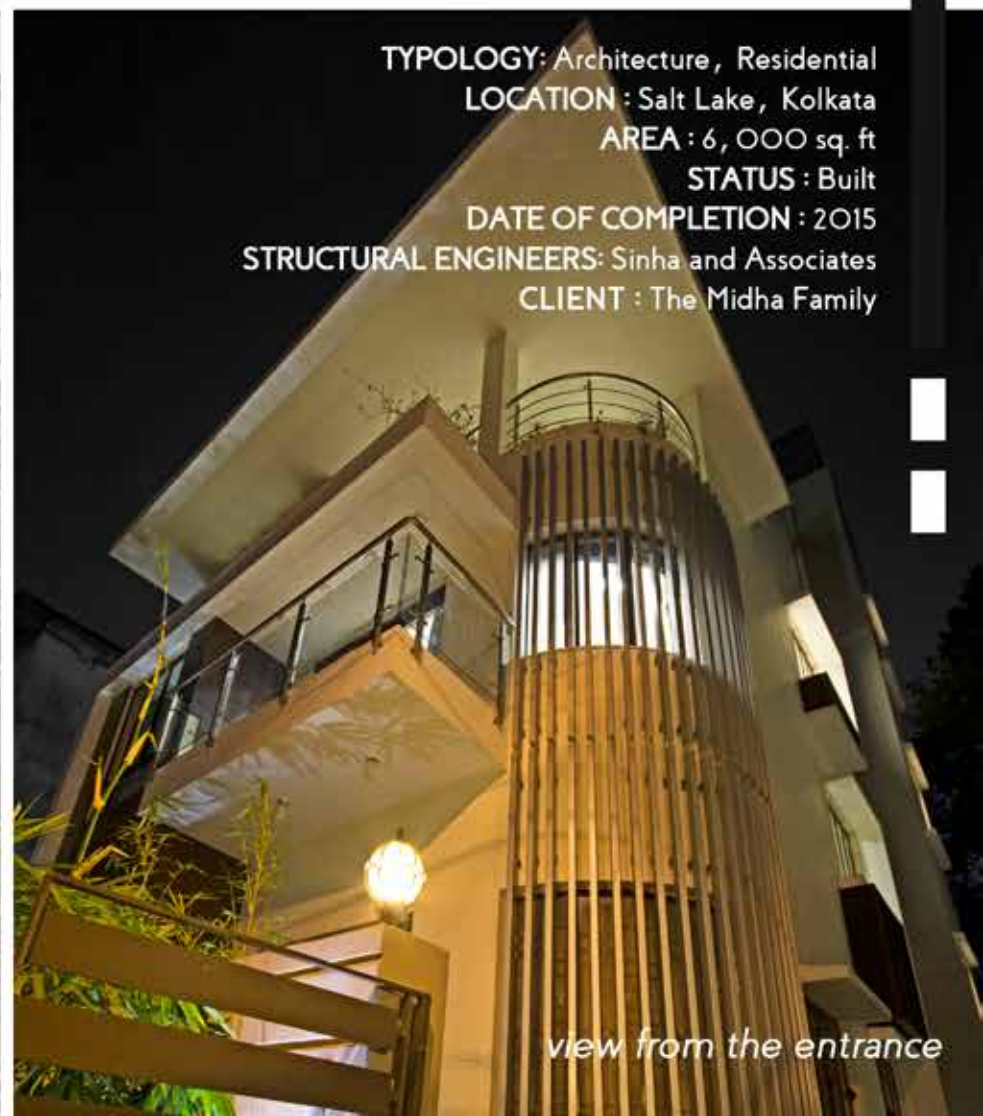


■ A single family residence at Kolkata accomplished by the firm as one of its flagship project encompasses a holistic and tropical approach in lending the look and feel of the residence. The building block is characterized by use of canopies varying in scale and size that lends a visual datum to the building. The residence is a complex of two storied building bound together and made cohesive by the use of canopies and vertical louvers that also shield the interior spaces from outside visually. The building overall adopts a contemporary minimalistic look by the wise use of elements. This gesture of providing indoor spaces and enveloping it with a labyrinth punctured with wide openings and balconies.

This membrane also act as the ventilating element allowing the various inner spaces to breathe as if the house in itself is the miniature of a macro cosmos where light plays the pre dominant factor in shaping and sculpting indoor spaces. The structure of house is simple and was designed in a way by which it can be sculpted even with the simplest craftsmanship and effort. Canopies not only lend a scale breaker in the overall mass but it also solves the purpose a screening from direct sunlight falling on the semi open spaces like the balconies which are timber cladded and ensures an utmost sense of tactile experience.



view of the villa from the street



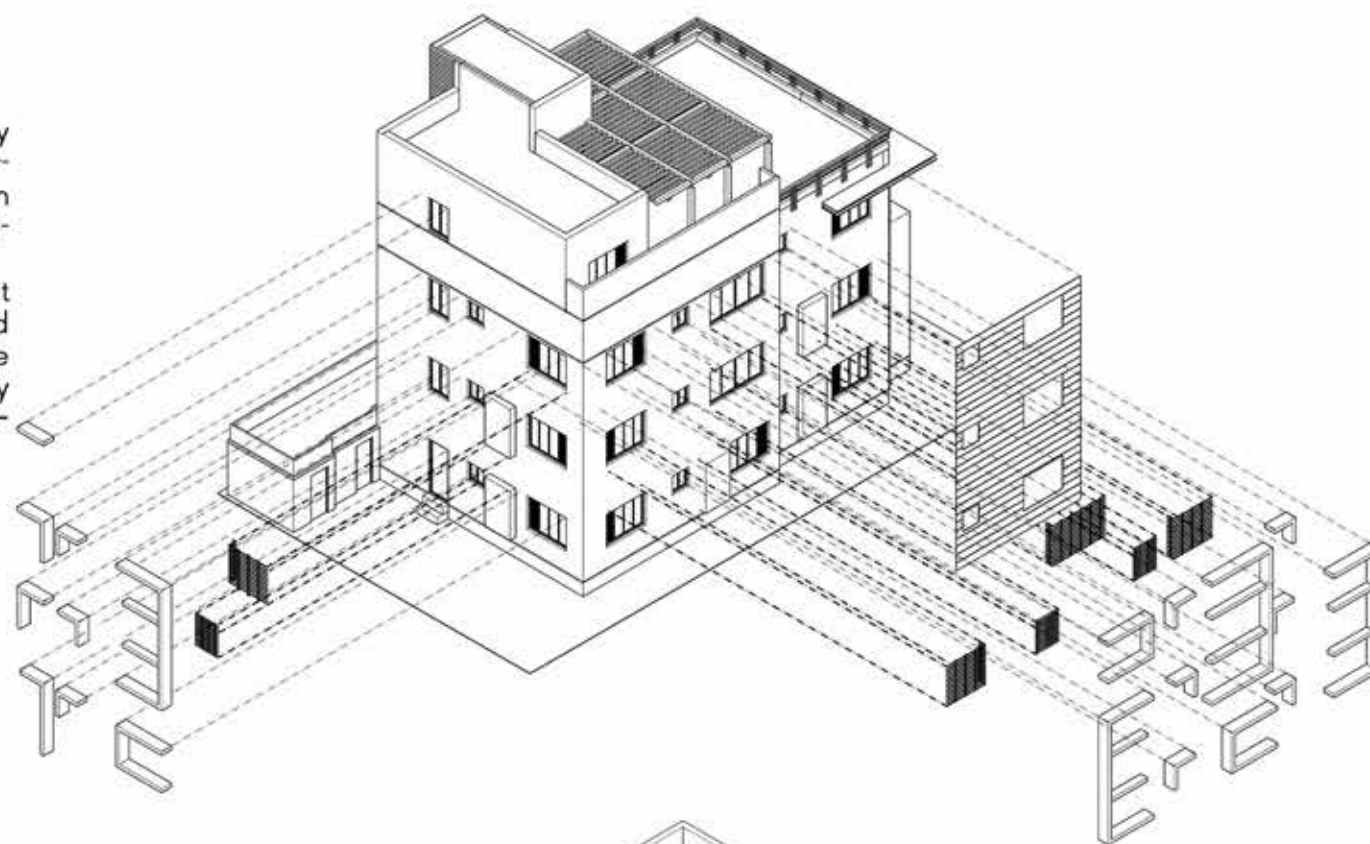
view from the entrance

TYPOLOGY: Architecture, Residential
LOCATION: Salt Lake, Kolkata
AREA: 6, 000 sq. ft
STATUS: Built
DATE OF COMPLETION: 2015
STRUCTURAL ENGINEERS: Sinha and Associates
CLIENT: The Midha Family

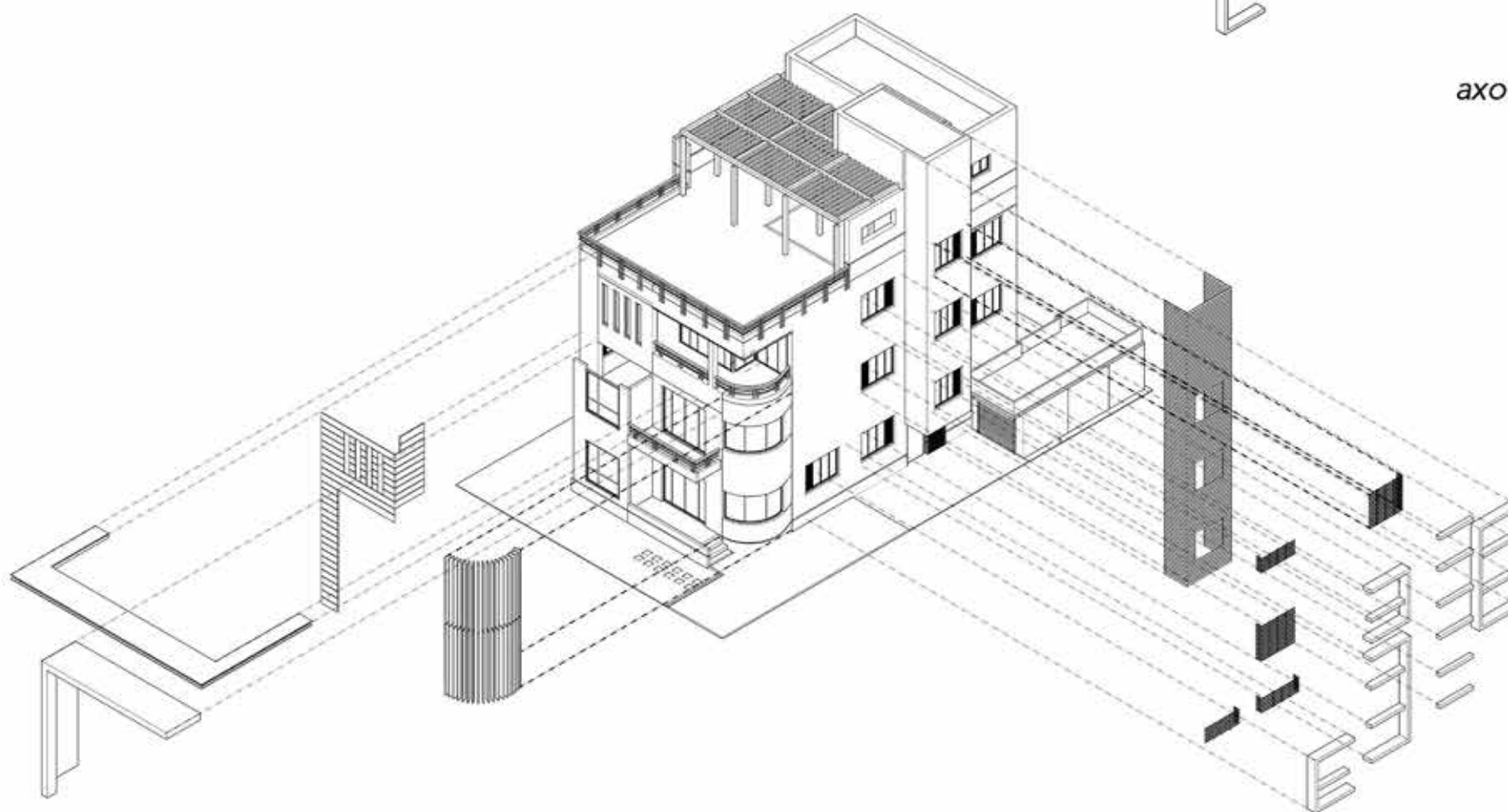
■ MATERIALS AND TECTONICS

Materiality brought about by materials that act as semi-permeable screening elements in both the horizontal and vertical dimensions.

The half shade brought about by the elements softens and accentuates the warmth of the materials. a contemporary echo of the **tropical architecture**.



axonometric view
(north-west)



axonometric view
(south-east)



wooden louvers



vertical slits



chajjas



wooden cladding



vertical louver



cantilever



graffiti

- | | | |
|-----------------|------------------|------------------|
| 1. GARAGE | 7. TOILET | 13. PLANTER |
| 2. LIVING SPACE | 8. DRESS | 14. HALL ROOM |
| 3. DINING SPACE | 9. BALCONY | 15. POWDER ROOM |
| 4. STAIRCASE | 10. VERANDAH | 16. UTILITY |
| 5. KITCHEN | 11. FAMILY SPACE | 17. SERVICE AREA |
| 6. BEDROOM | 12. STUDY ROOM | 18. TERRACE |



ground floor plan



first floor plan



second floor plan



roof plan



night view of the villa



close view of the front facade





bengal rowing club

■ The objective was to improve the quality of the club life and the Cultural legacy of the institution. The transformation has helped the club to improve the overall statistics and add muscle to the club's amenities, which in turn, has helped the club encourage deeper connections with the modern communities and attract newer and younger generations. Historically, the club has attracted middle aged members but in recent times a boost in the number of younger members is seen. At the heart of the reconstruction was the idea of making it look young and vibrant. Implementing dynamic designs that are superior and adding a touch of innovation to them.

Refurbishing the firefighting equipment, redesigning electrical outlay and making room for the air conditioner ducts, machines and water pipes. These utilities have then been camouflaged with a decorative yet elegant outer facade. The painting and aesthetics have been homogenized with the color palette of the brown, warm beige and white. This will echo the nestling comfort of nature and give a feel of an urban resort by the lakeside. The terrace on the first floor has been renovated with the glass railings to give an uninterrupted and serene view of the natural water-body attached to the property.



TYPOLOGY: Architecture, Recreational, Club

LOCATION: Rabindra Sarovar, Kolkata

AREA: 2 acres; Built-Up 40,000 sq. ft

STATUS: Built

DATE OF COMPLETION: 2017

LANDSCAPE: ASAUDP

STRUCTURAL ENGINEERS: SPA Consultants

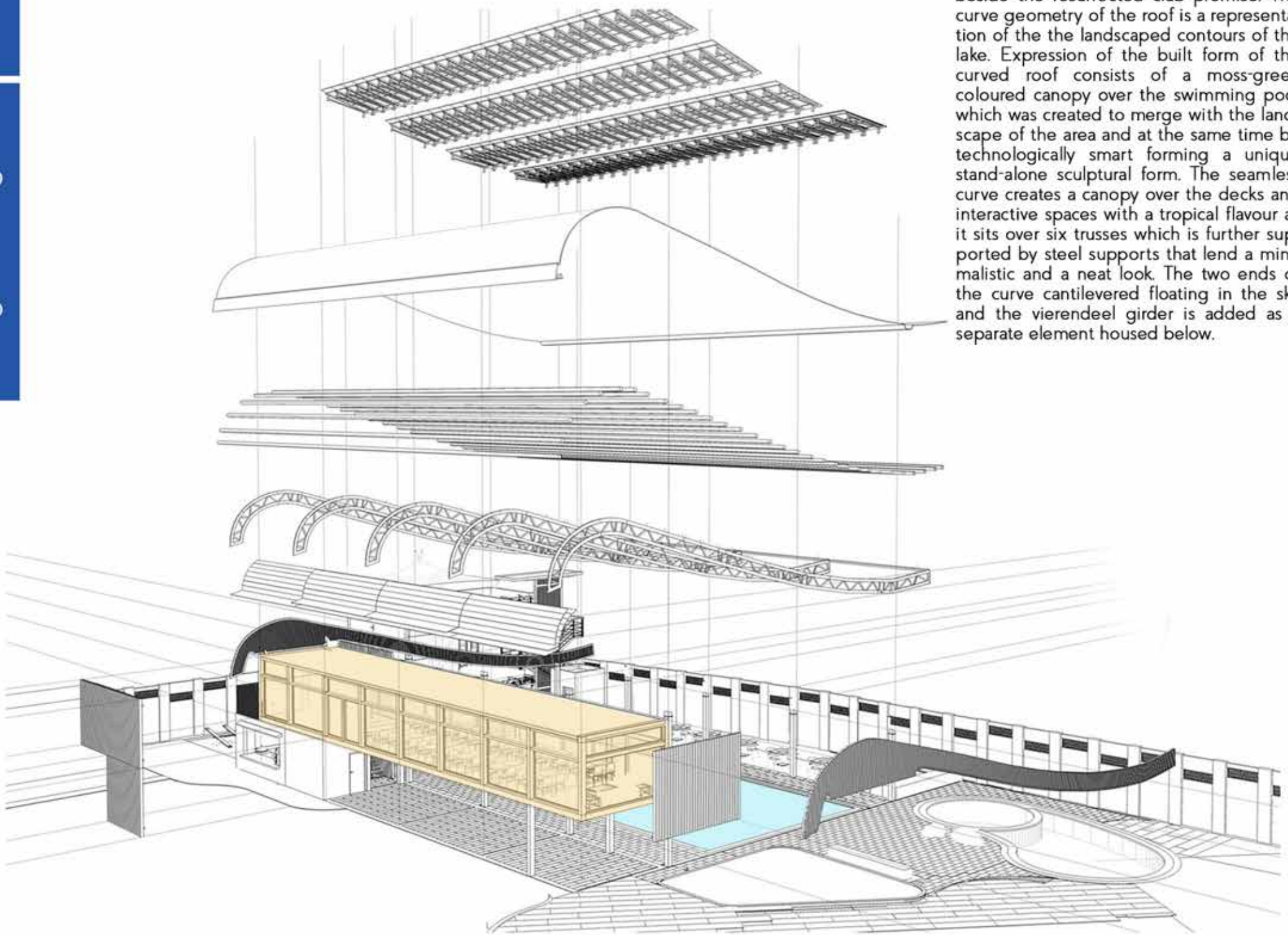
MEP CONSULTANT: Saent India Engineering Consultant,
Imperial PHE Services

INTERIORS: Rupande Shah

CLIENT: The Bengal Rowing Club

entrance block

- The public space around the swimming pool was created with a curved roof canopy beside the resurrected club premise. The curve geometry of the roof is a representation of the landscaped contours of the lake. Expression of the built form of the curved roof consists of a moss-green coloured canopy over the swimming pool which was created to merge with the landscape of the area and at the same time be technologically smart forming a unique stand-alone sculptural form. The seamless curve creates a canopy over the decks and interactive spaces with a tropical flavour as it sits over six trusses which is further supported by steel supports that lend a minimalistic and a neat look. The two ends of the curve cantilevered floating in the sky and the vierendeel girder is added as a separate element housed below.



axonometric view of the public space canopy



aluminium box louvers



ms truss



wooden louver



perlins



glass box



conduit roof



ms box frame



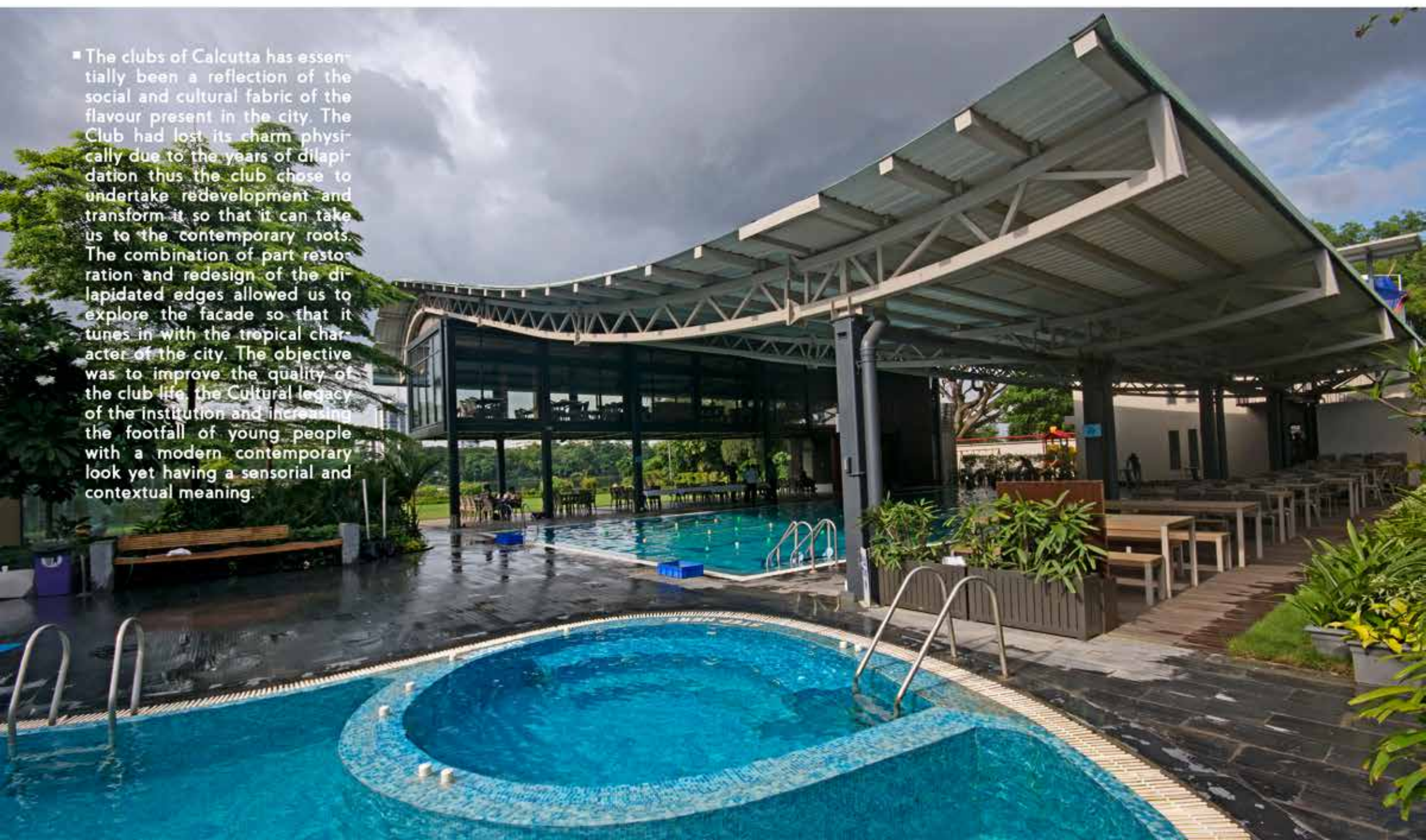
lawn side elevation



road side elevation

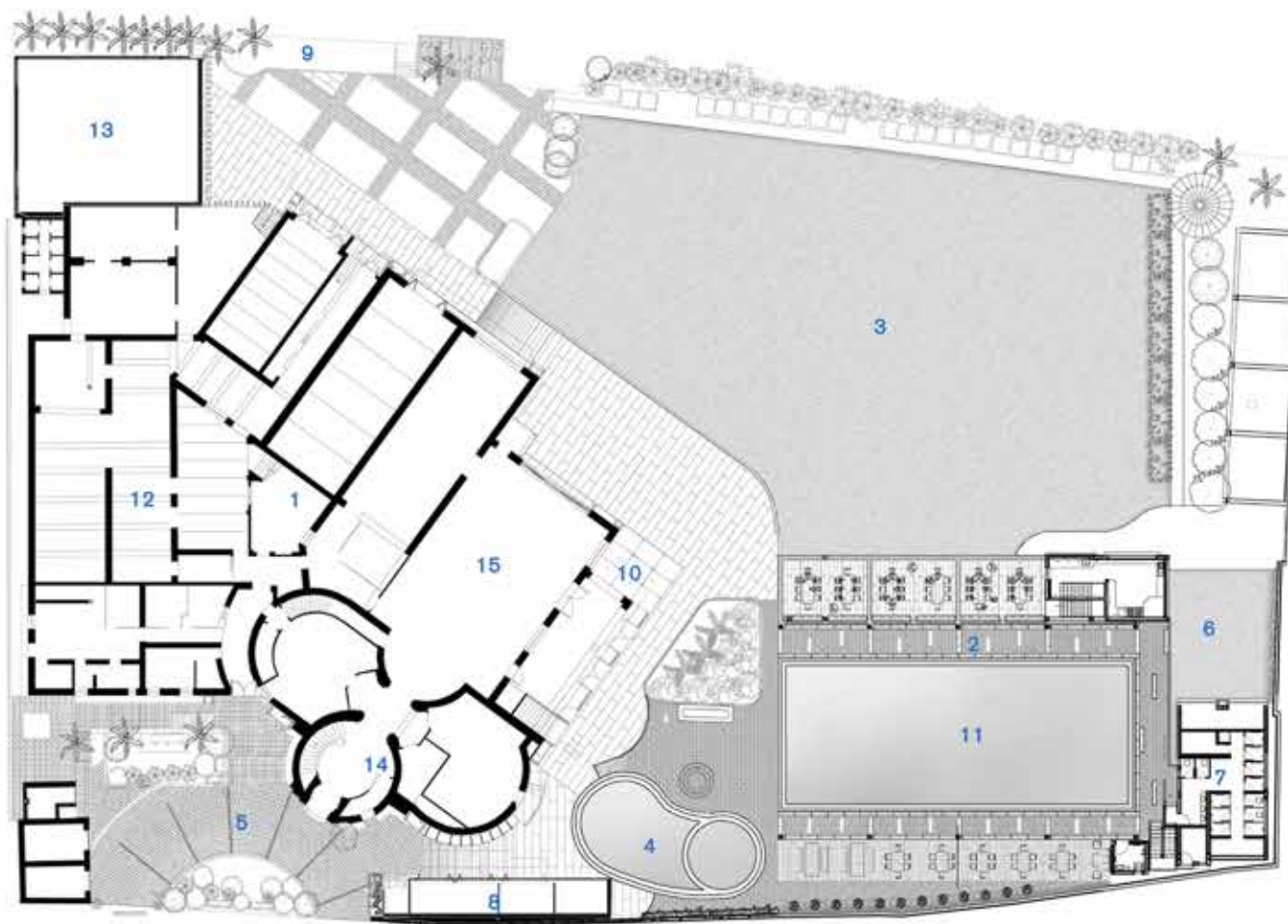


■ The clubs of Calcutta has essentially been a reflection of the social and cultural fabric of the flavour present in the city. The Club had lost its charm physically due to the years of dilapidation thus the club chose to undertake redevelopment and transform it so that it can take us to the contemporary roots. The combination of part restoration and redesign of the dilapidated edges allowed us to explore the facade so that it tunes in with the tropical character of the city. The objective was to improve the quality of the club life, the Cultural legacy of the institution and increasing the footfall of young people with a modern contemporary look yet having a sensorial and contextual meaning.



- The public space below the vierendeel girder has a seamless visual connection and conceives sitting spaces which looks over the pool for the members of the club. While, the vierendeel girder on top enhances the connection between the lake and pool, as one can look and merge into both of them from that point. The tropical architecture of the context was an important guideline for us while designing this space.





1. MAIN CLUB BLOCK
2. PUBLIC SPACE CANOPY
3. LAWN
4. KIDS POOL
5. ENTRANCE PORTICO
6. KIDS PLAY AREA
7. POOL CHANGING ROOM
8. PUMP ROOM
9. DECK AREA
10. GLASS BOX
11. SWIMMING POOL
12. KITCHEN
13. BOAT HOUSE
14. RECEPTION
15. HALL

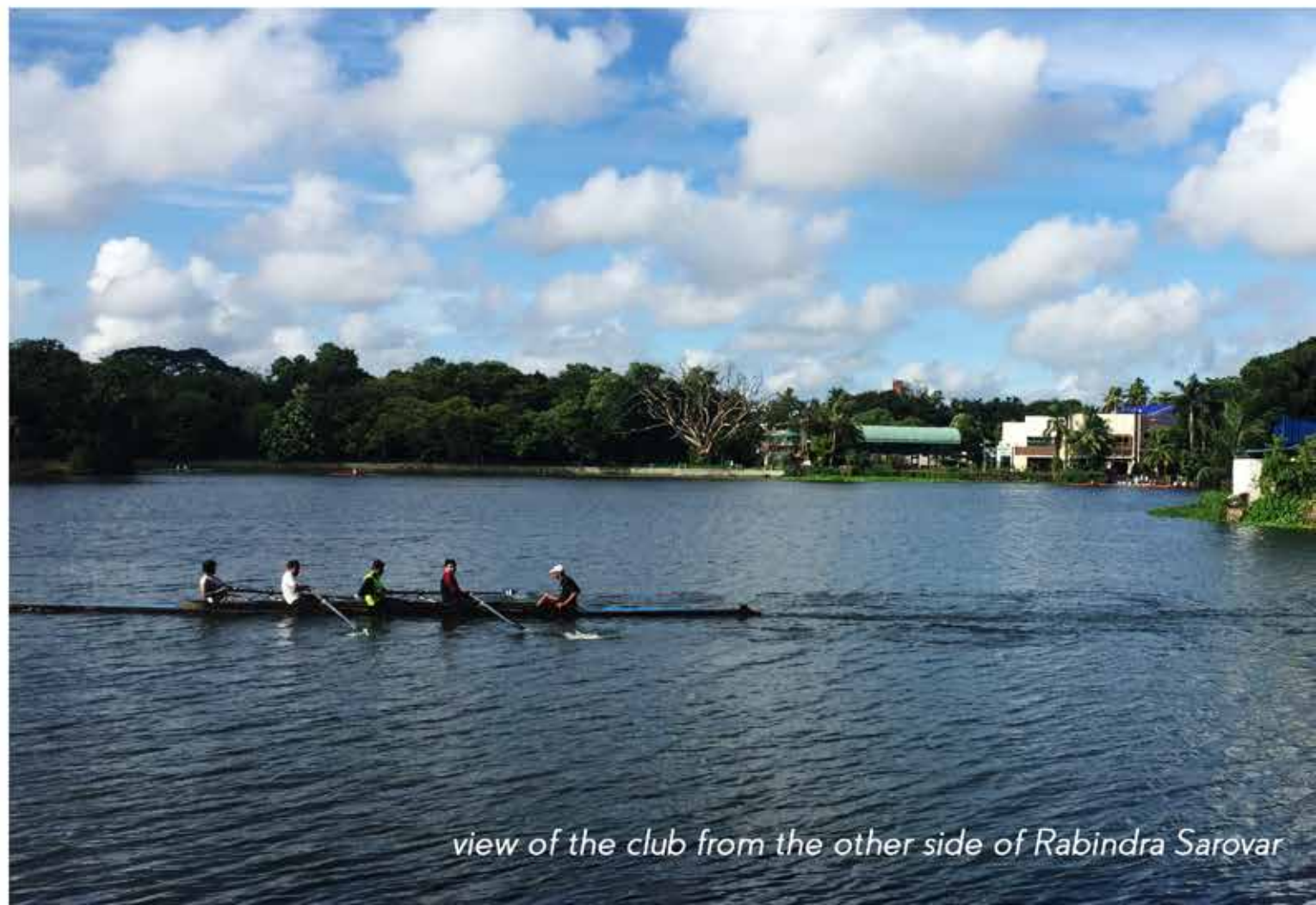
site plan
10M



view of the main block



view of the glass box



view of the club from the other side of Rabindra Sarovar

■ **TPOLOGY** : Architecture, Multi-Family Housing
LOCATION : Burdaman Road, Kolkata
AREA : 65, 000 sq. ft
STATUS : Built
DATE OF COMPLETION : 2012
STRUCTURAL ENGINEERS : Suvra Narayan Sil
MEP CONSULTANTS : Ratan Kr. Sarkar
CLIENT : Exclusive Homes Pvt. Ltd.





multi-family housing in Alipore

- Development within Kolkata largely involves the demolition of old buildings and replacing them with residential blocks, the styles of which are usually pastiched. ASAUDP felt the need to evolve a design language that would interpret the colonial context in a modern Architectural idiom.

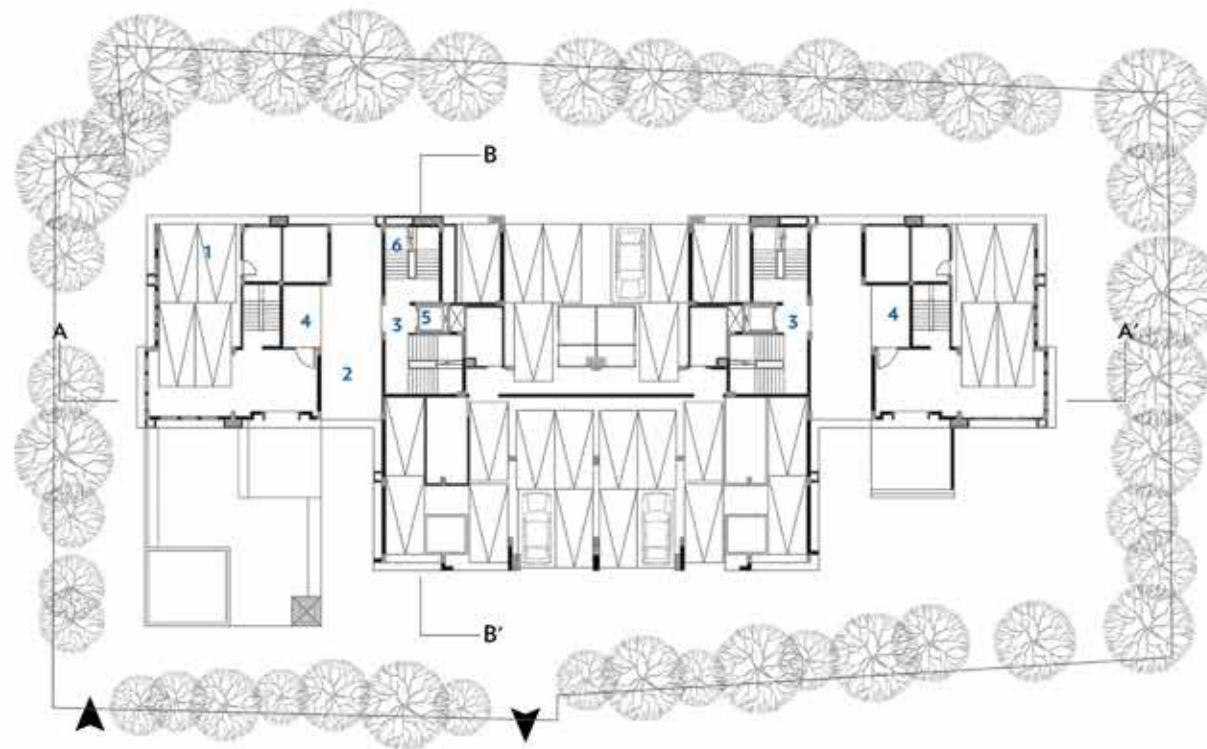
This multi-family condominium located right next to the old palace belonging to the Maharaja of Burdwan is a fitting example. The new building juxtaposes gracefully with the old through the repetition of key features in the palace: its louvers, and railings. The entire design has been conceived as a reinterpretation of the colonial character as a classical contemporary style.



close up of the details in the facade

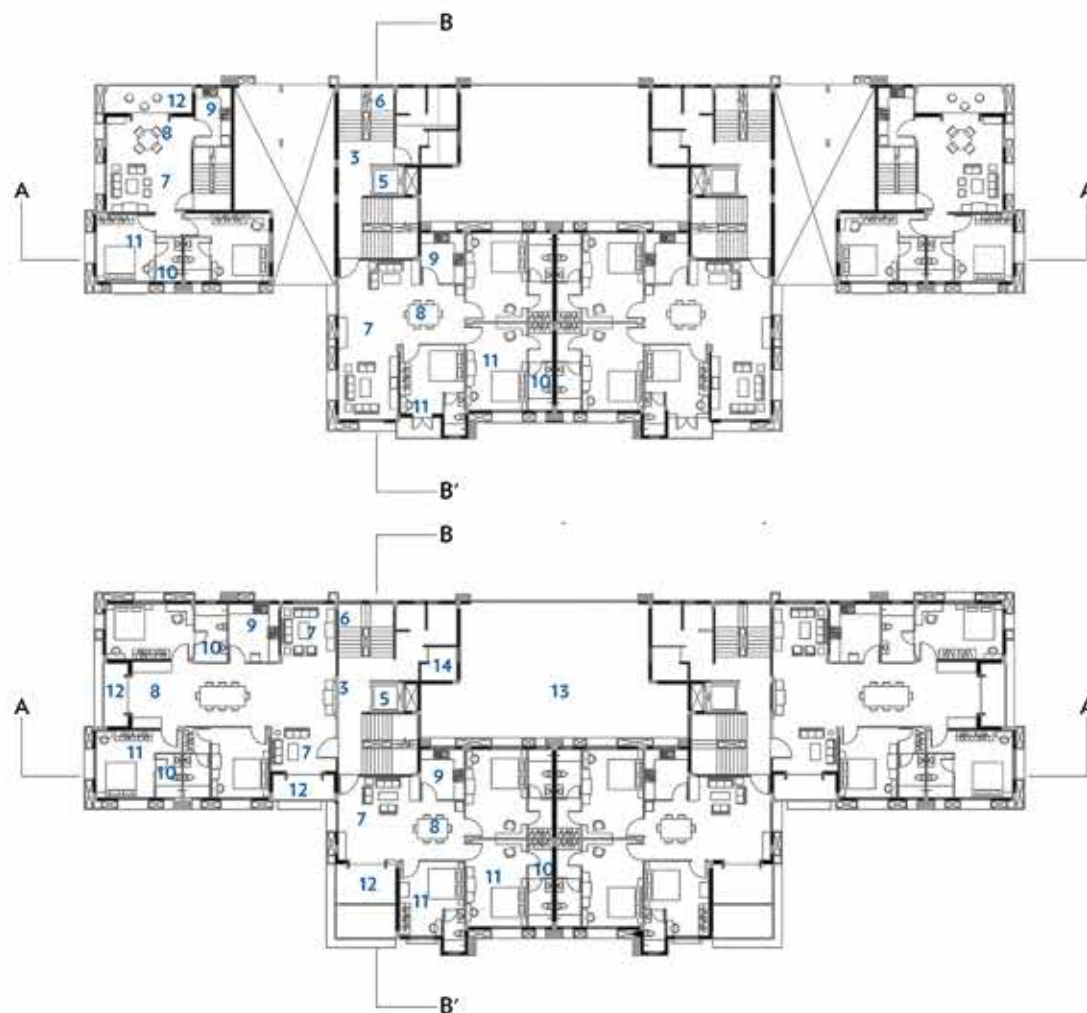


view of the apartments

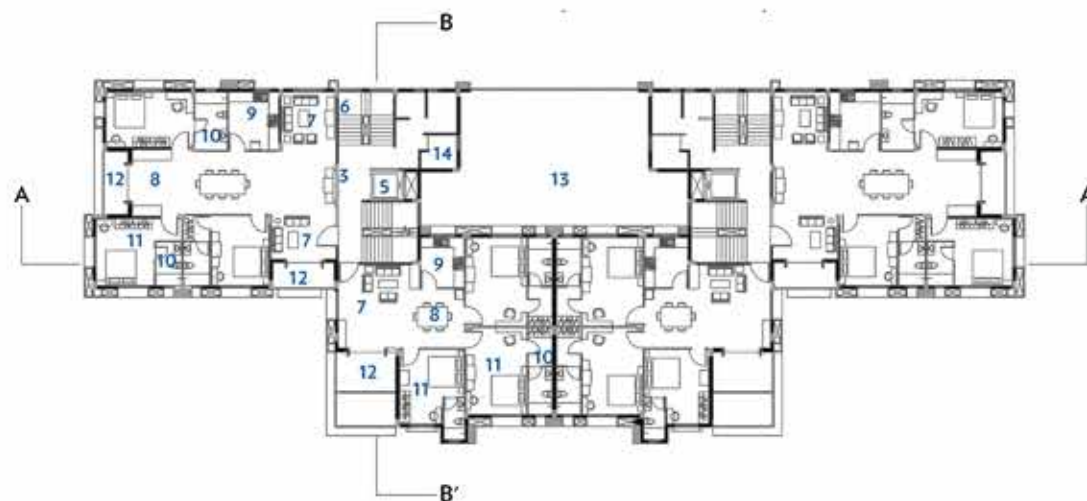


1. PARKING
2. DRIVEWAY
3. LOBBY
4. SECURITY
5. LIFT
6. STAIRCASE
7. DRAWING ROOM
8. DINING ROOM
9. KITCHEN
10. TOILET
11. BED ROOM
12. BALCONY
13. STORE

ground floor plan



typical floor plan (1st - 2nd)



typical floor plan (3rd - 7th)



horizontal striations



iron railings



aluminium louvers



open terrace



planters



concealed services



cobblestone floor

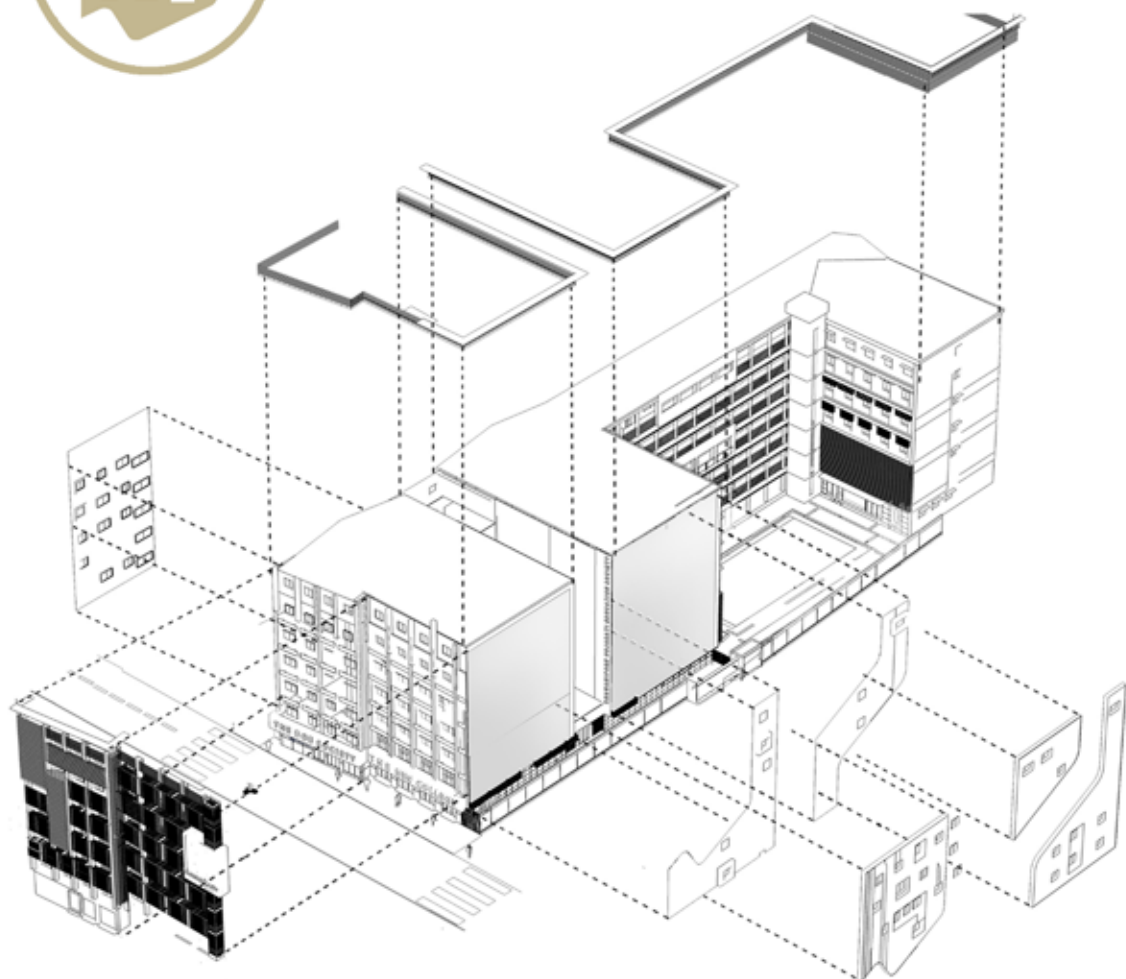


the bes college





the bes college



- The program involved the redevelopment and revitalization of the Bhawanipore Education Society Building. The attempt was to create a space where the façade, common areas, auditorium courtyard and the arrival would be developed to create a contemporary vibrant character with all modern amenities. signage and technology suited to young students.

Overlapping is used as a principal to create layers of surfaces thereby enhancing the play of light and shadow, protecting the interior active areas from direct heat gain. The perforated screens on the front facade not only conceals the service network but also shield the classrooms and laboratories from direct heat gaining harsh sunlight. similarly the HPL facade on two side helps in adding an additional lamina to the overall existing mass. Vibrant hues of colour with the wide use of louvers give the distinct finish to the overall composition.



TYPOLGY: Architecture, Institutional

LOCATION : Bhawanipore, Kolkata

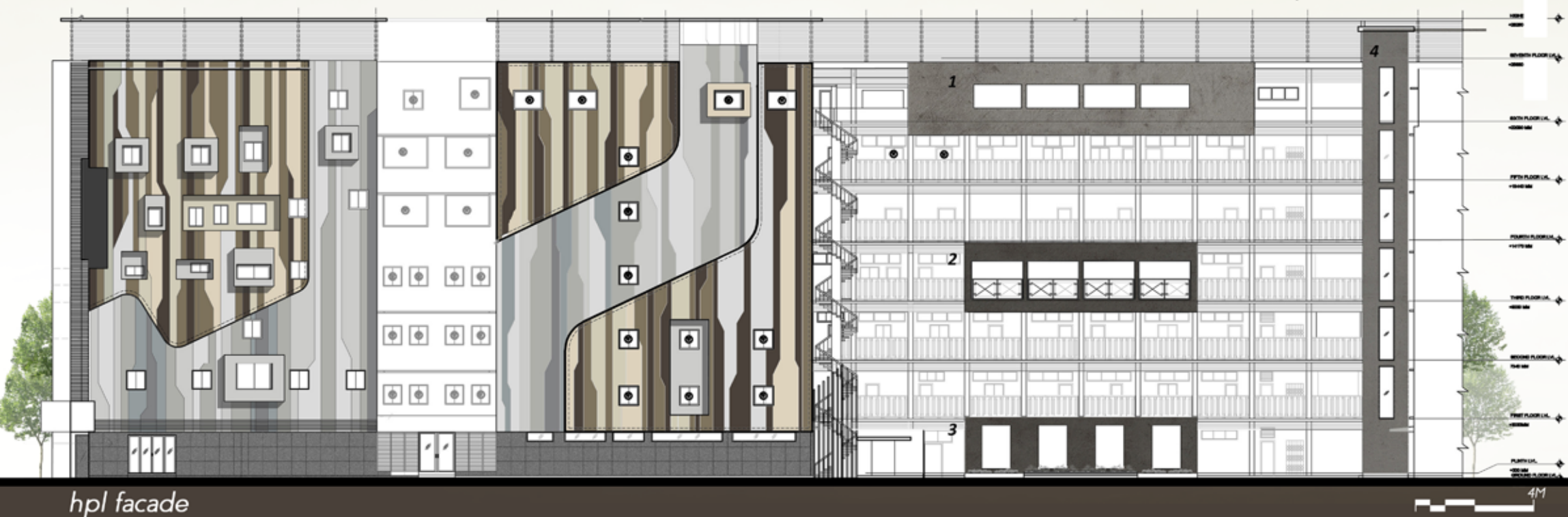
AREA : 30,000 sq. ft

STATUS : Built

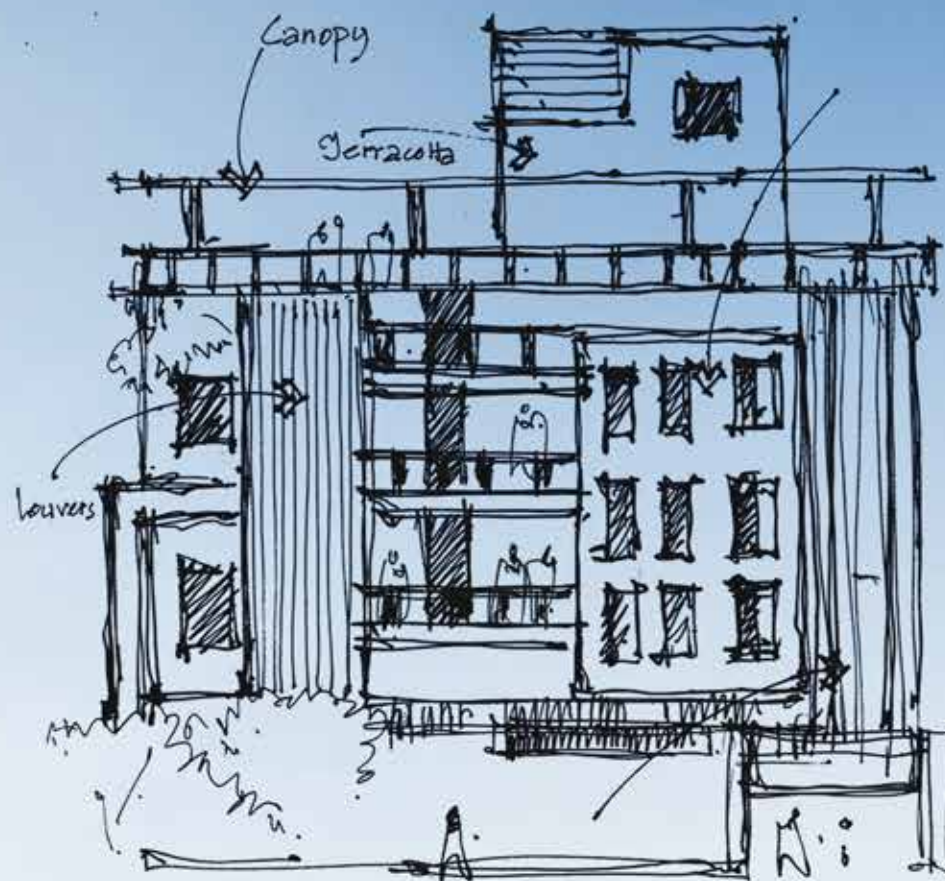
DATE OF COMPLETION : 2017

ENGINEERS : SPA Consultants

CLIENT : Bhawanipore Education Society



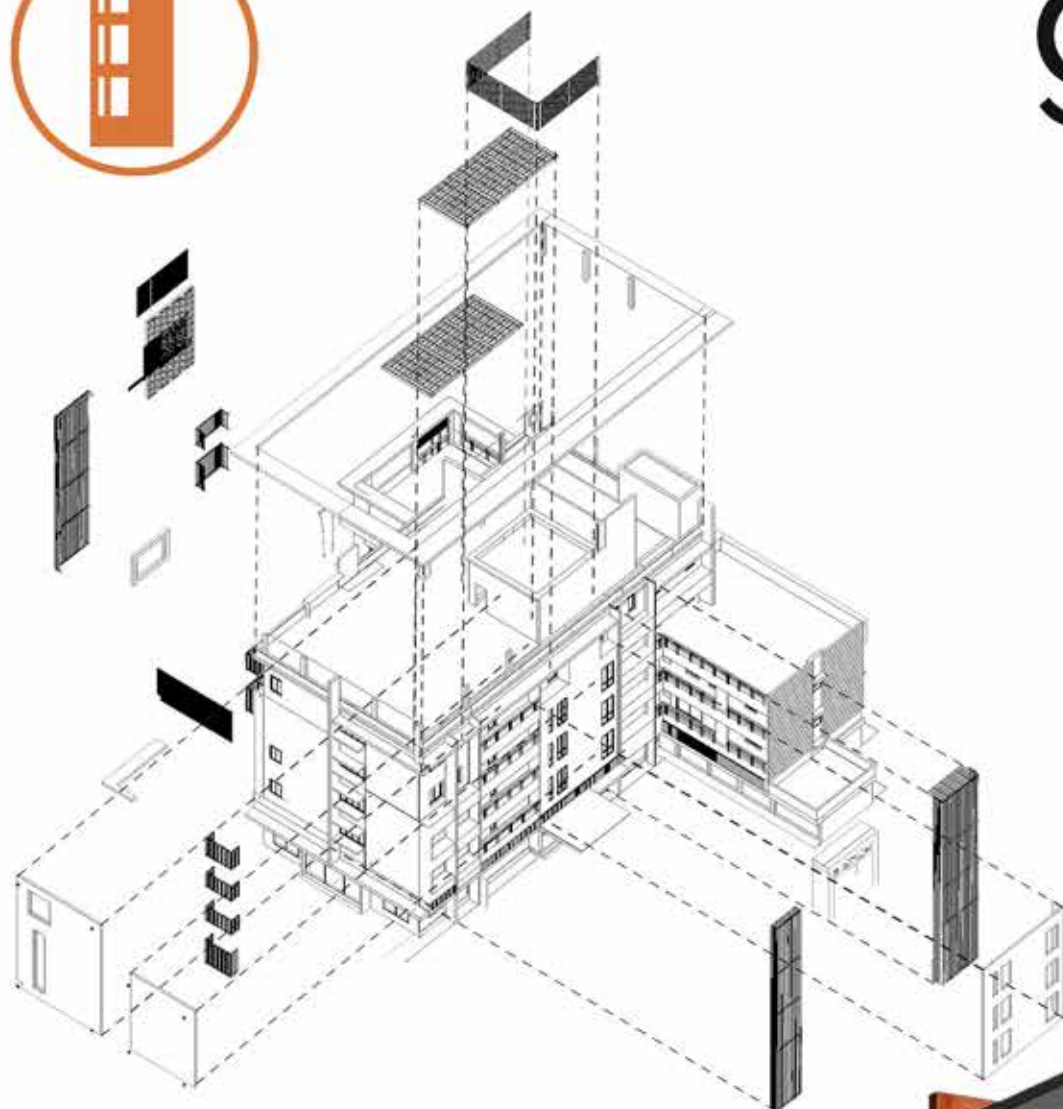
■ **TYPOLOGY:** Architecture, Multi-Family Villa
LOCATION: Alipore, Kolkata
AREA: 40,000 sq. ft
STATUS: Being Built
LANDSCAPE: Inscape Design Studio
MEP CONSULTANT: Sinha and Associates
INTERIORS: Gorsia Design Studio, Space Consultants
CLIENT: The Goenka Family





goenka villa

■ Encompassing a sculpted and crafted expression of terracotta hues, a two family residence sits at a prominent location in Alipore, Kolkata. Goenka Villa is a collective collage of regional expression of materiality, texture, tactile qualities and their juxtaposition with the stark use of colours that remind the soul of 'Laal Maati'. The building is composed of layers of masses having slate and warm terracotta hues as two contrasting colours. Timber planks are used for wrapping portions of exterior facade lending a modern contemporary character sensitively superimposed on the terracotta surfaces. Together it's a rational take on contemporary tropical modernist architecture. It is a key project in understanding material practices as an aid with respect to location and identity as a key factor in the appreciation of contemporary tropical Asian architecture.



water wall

light ms pergola

vertical louver

horizontal louver

ac louvers

cantilever

metal jallis

edifice





edifice



- The program involved the mixed use development of retail/commercial, housing and a roof top pool. The black and white colour palette and mass breaks allowed for a lower block with the commercial and a pool on the top on the terrace with the housing block, a 18m height stretch on top of the retail block housed in the middle. The volume of masses had been stacked and acts as the background for the mass projecting out which holds a rooftop swimming pool. Commercial activities dominate the ground and the first floor levels while residential units are on the first floor. Minimal mass with rhythmic punctures and fenestrations forms the design language of the block.



TYPOLOGY: Architecture, Mixed Use

LOCATION: Behala, Kolkata

AREA: 52, 000 sq. ft

STATUS: Built

DATE OF COMPLETION: 2014

STRUCTURAL ENGINEERS: Sinha and Associates

MEP CONSULTANTS: Devendra Misra, Basudeb Das

CLIENT: Ecoprime Highrises Pvt. Ltd.

view of the rooftop swimming pool

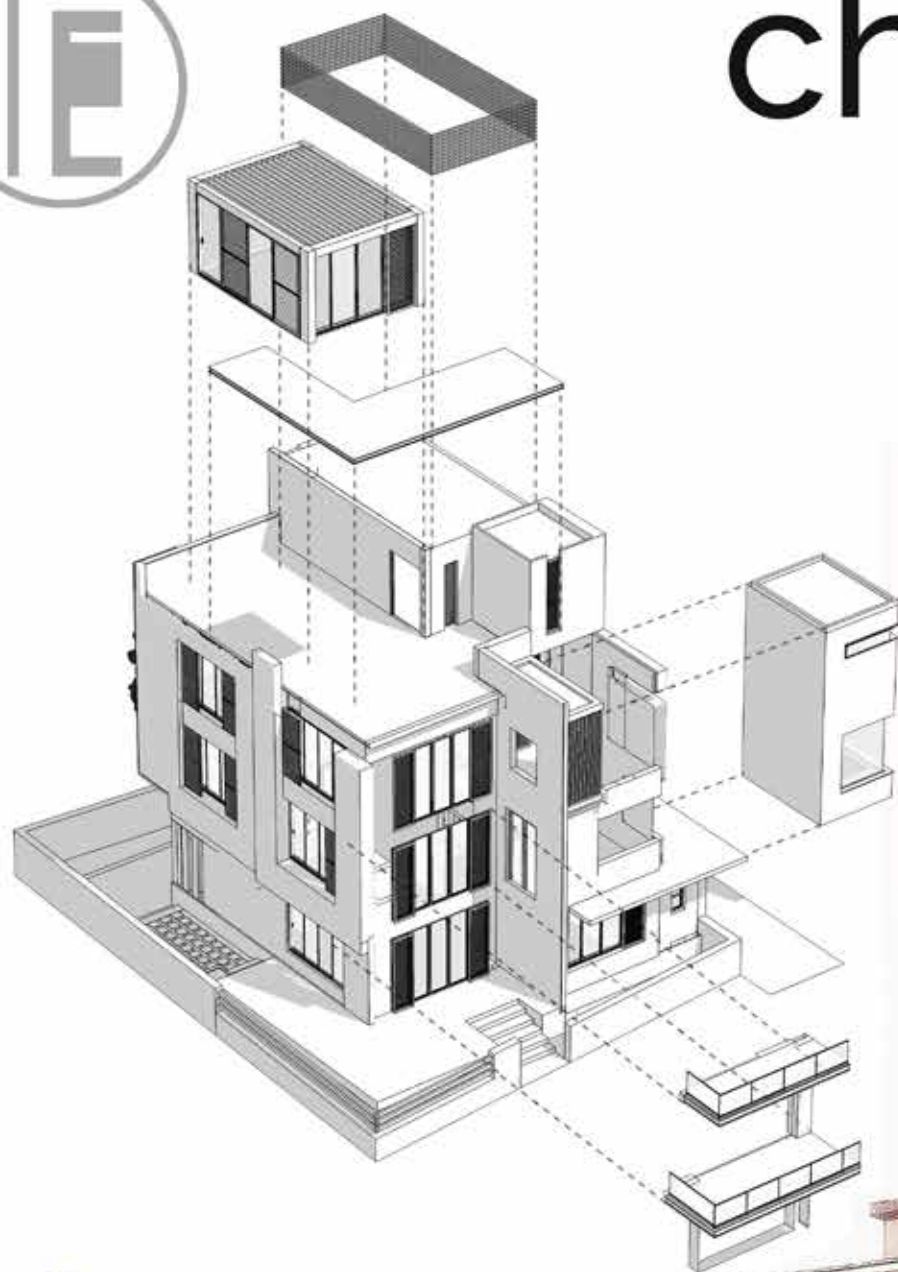
strong hard amorphous tropical modernism





chaudhuri villa

- On the banks of the river Hooghly the site evolved a strong sense of space. The simple program of living, dining and bed was divided in the three floors with a spatial direction towards the river. A composition of volumes and masses inspired by the modern tropical architecture. Extensive use of canopies that lend a scale break to the overall composition. Wide open balconies have been sculpted out in the built form that gives a permeable visual transition to the landscape. The rough concrete texture is used along with exposed brick texture that creates a subtle visual palette.



TPOLOGY: Architecture, Single Family Villa

LOCATION: Barrackpore, Kolkata

AREA: 3,000 sq. ft

STATUS: Being Built

STRUCTURAL ENGINEERS: Poseidon Engineering & Services

MEP CONSULTANTS: Eltech Engineers, R.R. Enterprise

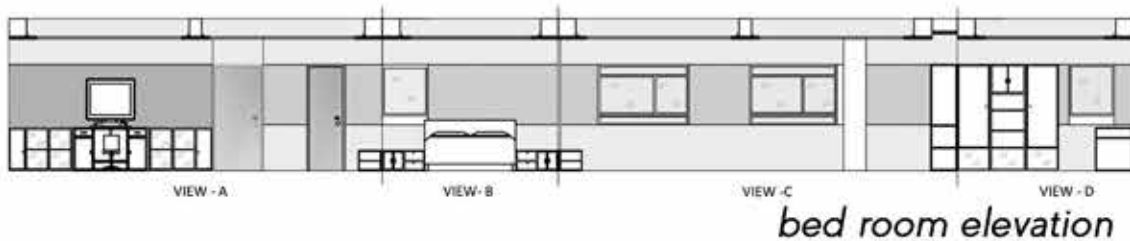
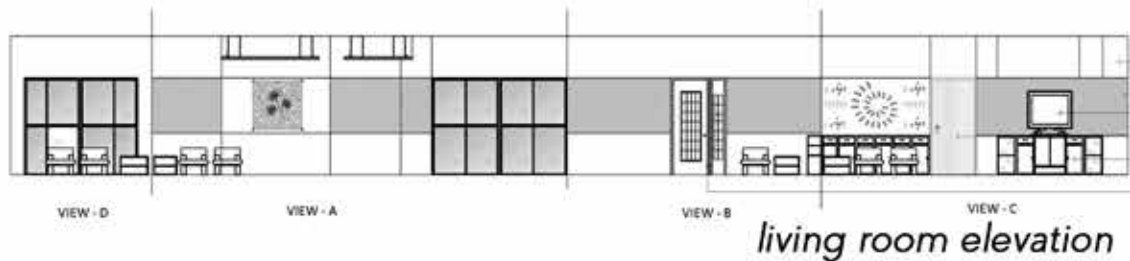
CLIENT: The Chaudhuri Family

usha uthup residence

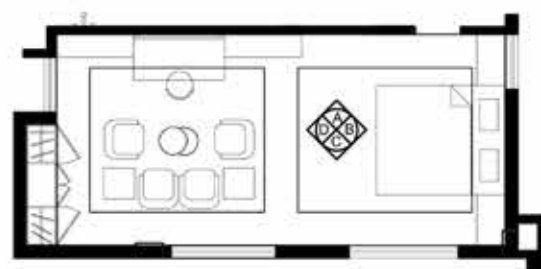




usha uthup residence



living room blow-up



bed room blow-up

- Simple elegant use of the colours and strike of red accentuate the visuals. Space is a lavish free flowing continuum with minimal wall intervention. The wall graphics complement the look and feel of an elegant interior layer. The vibrant colour and soothing illumination create a serenity and comfort within the house. Visually permeable and bright interiors enhances the feel and ambiance. The use of stark lines in the interiors gives a contemporary spatial configuration. The inkling was towards contemporary aesthetics, clean horizontal lines, and sculptured rectangular forms, large expanse of glazing and wide sliding screens creating a desired visual delight. The amalgamation of dark and light colours give a sense of simple highlights within the space. The design of a celebrity home poses unique character, thus the idea was to develop a mean of visual communication expressing the character of the personality.



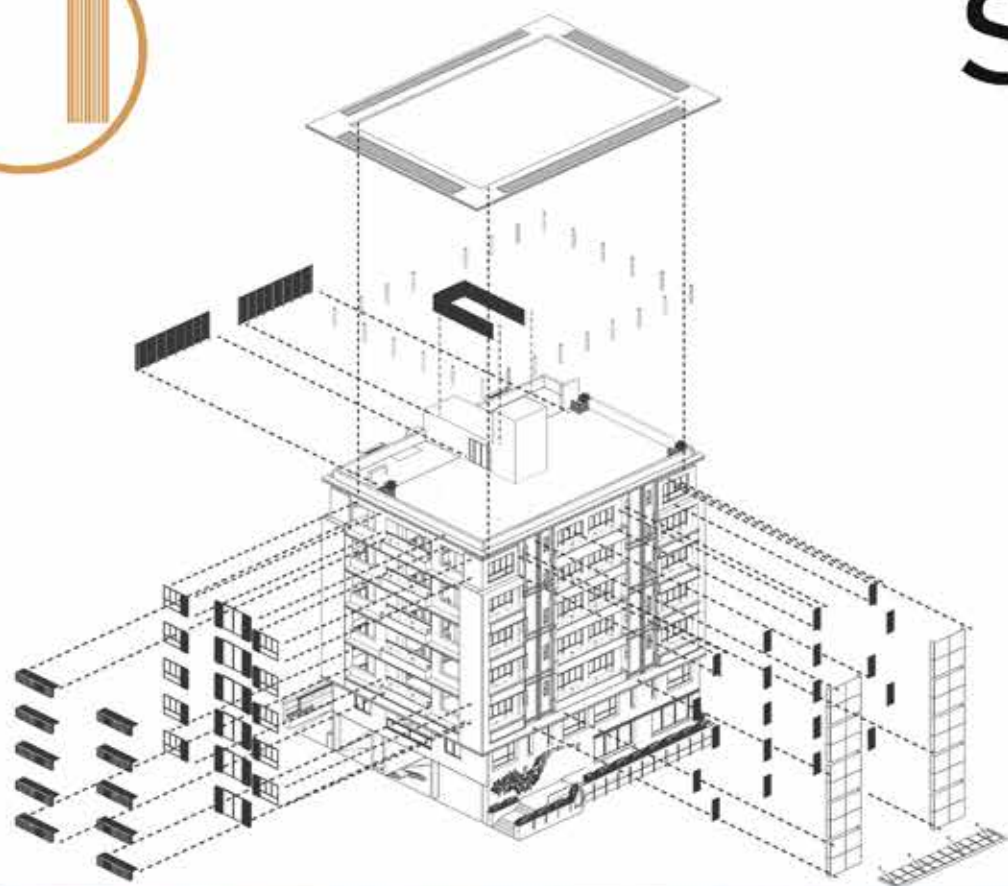
TYPOLOGY: Interior, Residential
 LOCATION: Tangra, Kolkata
 AREA: 3,000 sq. ft
 STATUS: Completed
 DATE OF COMPLETION: 2016
 CLIENT: Usha Uthup

short street





short street



■ This mixed-use building houses an office and residential spaces are located in one of the busiest areas of Kolkata's urban nexus. The first two stories encompass the offices while the rest of the floors are purely residential. The character of the building is subtly broken into two halves horizontally depicting this difference between the functionality of the building. The dark gray of Prodema with an algorithmic pattern punctured in it adds a dynamic sense into the building, with long louvers spanning vertically from the top to bottom articulates the facade into three halves with balconies in between them. Planters add green to the gray and terracotta of the back. Overall, Short Street was a complex expression in trying to reflect the availability of joy in the busy mundane urban lives present in the hearts of the people of Kolkata.

TYPOLOGY: Architecture, Mixed Use

LOCATION : Short Street, Kolkata

STATUS : Being Built

AREA : 10,000 sq. ft

STRUCTURAL ENGINEERS : Suvra Narayan Sil

CLIENT : Ecoprime Highrises Pvt. Ltd.

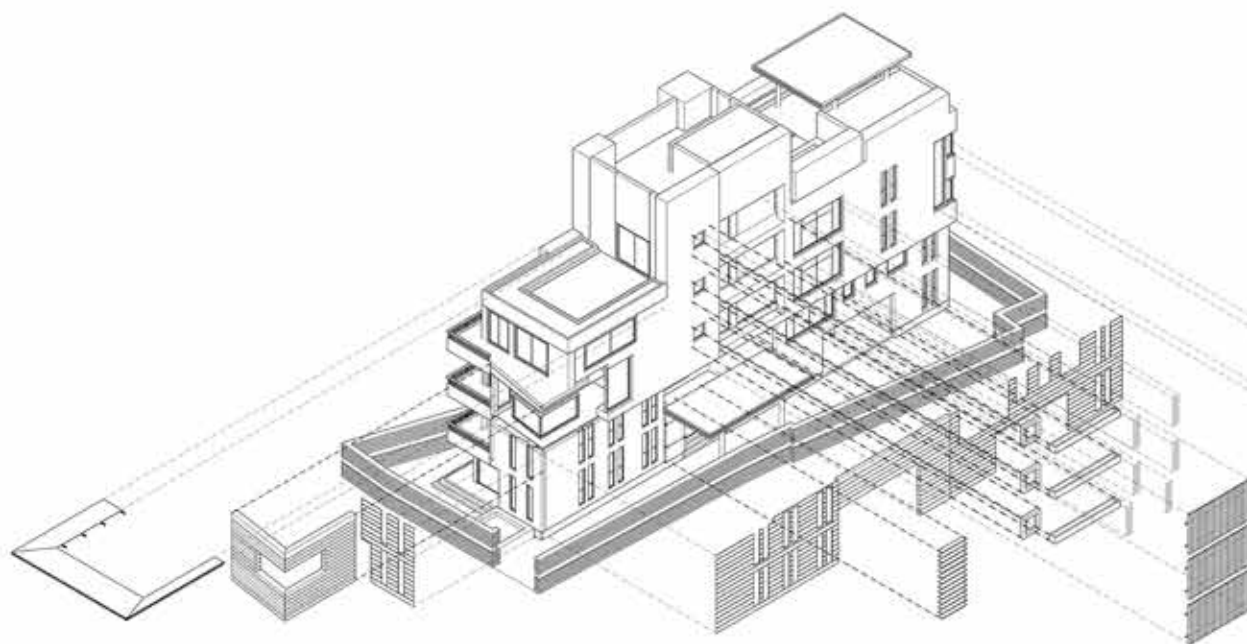




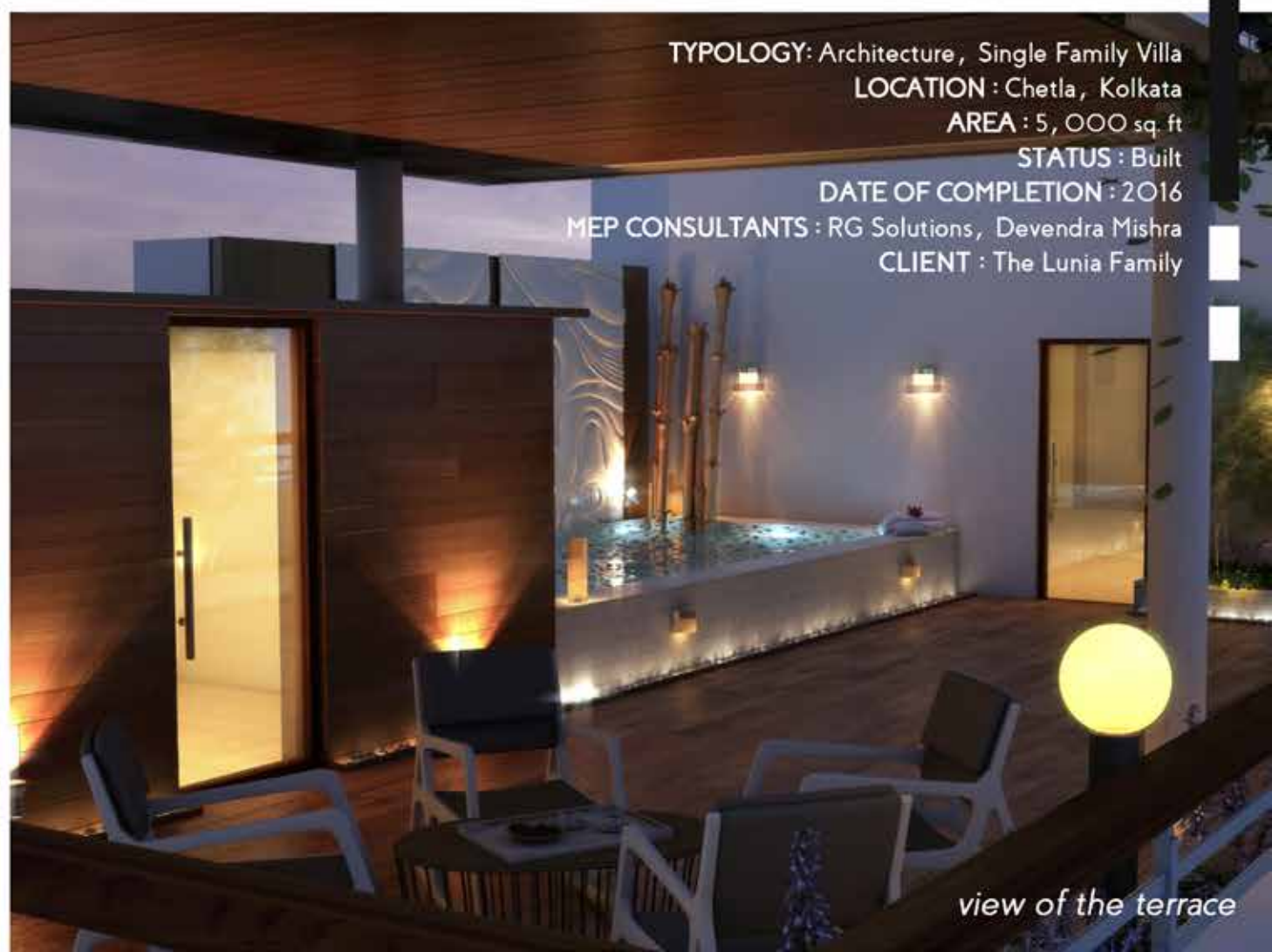


lunia villa

- The building has been designed to address Kolkata's hot and humid climate. Large openings have been used for ventilation. louvers have been used to filter the harsh local sun. A terrace garden has been provided for an aesthetic way of enjoying the outdoors, in the manner of age old Kolkata houses. The spaces at street level are designed for privacy, whereas the house progressively opens up as it goes higher. The largest open space, which is the terrace, is open, airy and designed for entertaining. Stone and wood finish cladding have been used as materials on the elevation to enhance the contemporary feel of the villa.



view of the villa from entrance



TYPOLOGY: Architecture, Single Family Villa

LOCATION : Chetla, Kolkata

AREA : 5, 000 sq. ft

STATUS : Built

DATE OF COMPLETION : 2016

MEP CONSULTANTS : RG Solutions, Devendra Mishra

CLIENT : The Lunia Family

view of the terrace

■ **ayan sen architects**
urban designers planners
2005-2017

contact

e-mail: ayan2791@yahoo.com

asaudp@yahoo.com

mobile: +91-9830724767

www.ayansenarchitects.com